



Suporte Aruba para Access Point AP 90

Linha de suportes AP 90 Aruba para superfícies lisas e trilhos permite que você encaixe seu Ponto de Acesso da linha AP-90 em uma parede e outras superfícies.

www.bztech.com.br

AP-90 Series Mounting Kit

Installation Guide

The AP-90 Series mounting kit provides a wall mounting option and additional ceiling mounting options for the AP-90 Series wireless access points (AP). The mounting kit includes the following items:

- Wall mounting adapter
- Adapter for 15/16-inch (2.4-cm) ceiling tile rails. Use this adapter to mount the AP on rails that are recessed above the surface of the ceiling tile
- Adapter for 9/16-inch (1.4 cm) ceiling tile rails. Use this adapter to adapt the integrated mounting tabs to narrower rails (recessed or flush)

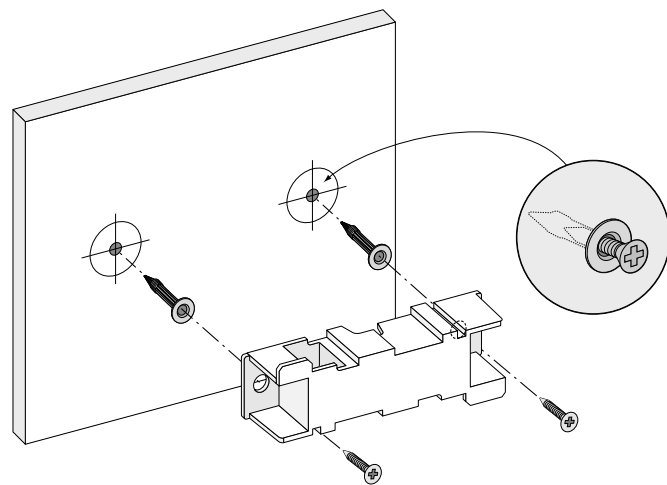
For complete information about selecting the location and setting up the AP, see the *AP-92 and AP-93 Wireless Access Point Installation Guide*.

Using the Wall Mount Adapter

The AP-90 Series wall mount adapter allows you to securely attach your AP-90 Series access point to a wall.

1. Begin by attaching the wall mount adapter to the wall as shown in [Figure 1](#).
 - a. Install any necessary wall anchors. Wall anchors are not included in this kit.
 - b. Align the screw holes in the mounting bracket with the previously installed anchors or demarcated screw points.
 - c. Insert the screws to secure the mounting bracket. Screws are not included in this kit.

Figure 1 Attaching the Adapter to a Wall



2. Insert the necessary cables into the ports on the AP. Optionally, you can route the cables through the cut-out in the adapter if they are coming from below the AP.
3. Attach the AP to the secured mounting adapter as shown in [Figure 2](#).
 - a. Align the AP with a mounting adapter, placing the AP so that its mounting tabs are at an angle of approximately 30 degrees to the adapter.
 - b. Pushing toward the wall, rotate the AP counter-clockwise until it clicks into place (see [Figure 2](#))

Figure 2 Attaching the AP to the Mounting Bracket

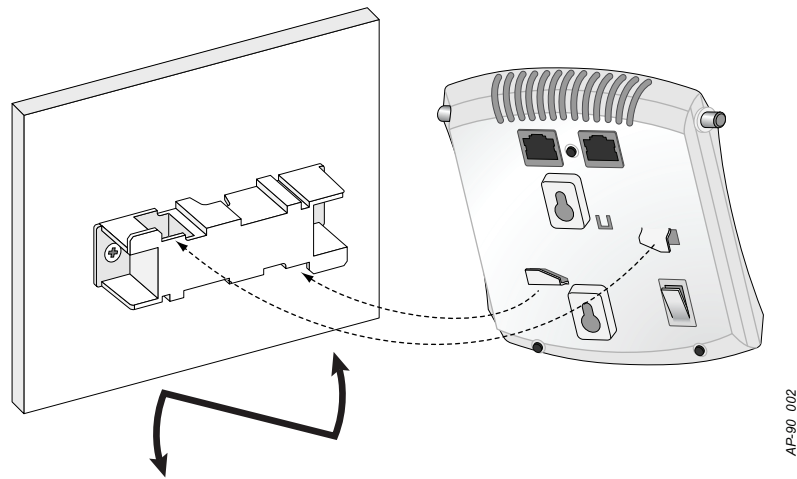
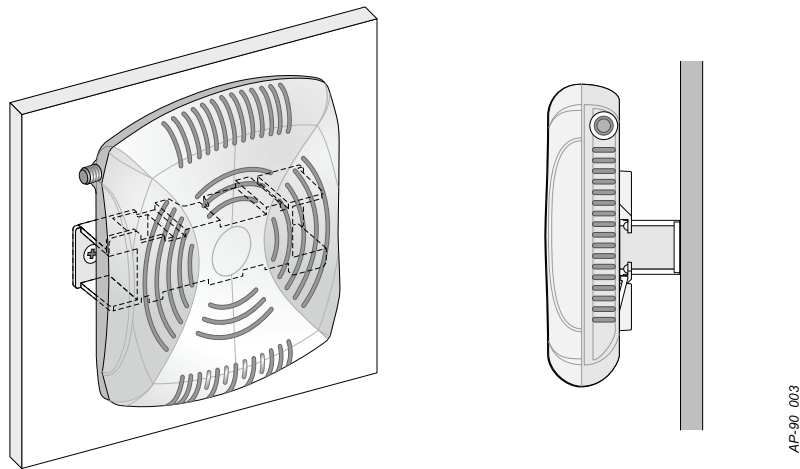


Figure 3 Completed Installation



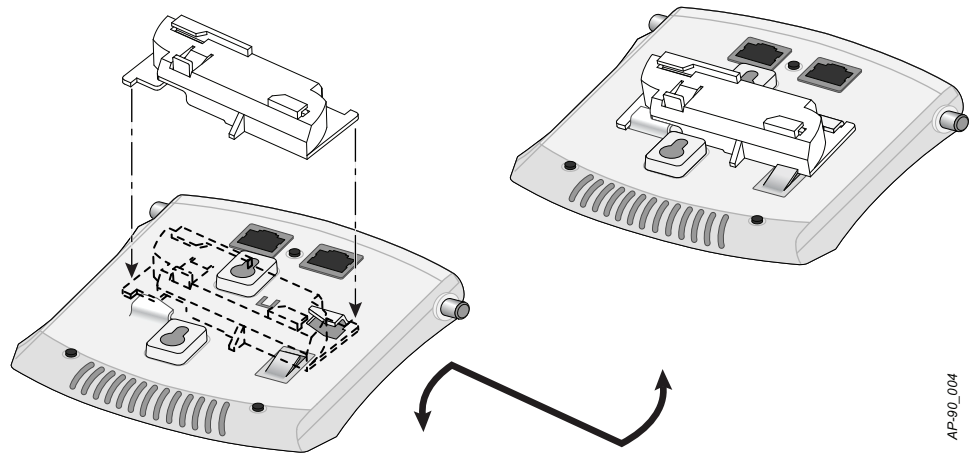
Using the Ceiling Rail Adapter

The AP-90 Series' enclosure provides integrated mounting tabs that are designed to snap onto a standard, non-recessed 15/16-inch (1.4 cm) ceiling tile rail; the optional mounting kit is not required for this installation. The mounting kit includes adapters that allow you to mount the AP-90 Series unit on a recessed or non-recessed standard 9/16-inch (1.4 cm) rail or on a recessed standard 15/16-inch (1.4 cm) rail

To attach either ceiling rail adapter to the AP-90 Series AP:

1. Place the adapter against the back of the AP with the adapter at an angle of approximately 30 degrees to the tabs (see [Figure 4](#)).
2. Twist the adapter clockwise until it snaps into place in the tabs (see [Figure 4](#)).

Figure 4 Attaching the Ceiling Mount Adapter



After the adapter is attached to the AP, mount the AP on a ceiling tile rail as follows:

1. Align the AP with a ceiling tile rail, placing the AP so that the mounting tabs on the adapter are at an angle of approximately 30 degrees to the ceiling tile rail (see [Figure 5](#)).
Make sure that slack in connected cables is above the ceiling tiles.
2. Pushing toward the ceiling tile, rotate the AP clockwise until it clicks into place on the ceiling tile rail (see [Figure 5](#)).

Figure 5 Mounting the AP

