



## Leitor Zebra DS6708

O DS6708-DL é um dos leitores mais eficientes de sua categoria, possui funcionalidade combinada, capaz de realizar leituras das principais simbologias de código de barras do mercado 1D, PDF, postal e 2D.

# SYMBOL DS6708

## Quick Start Guide

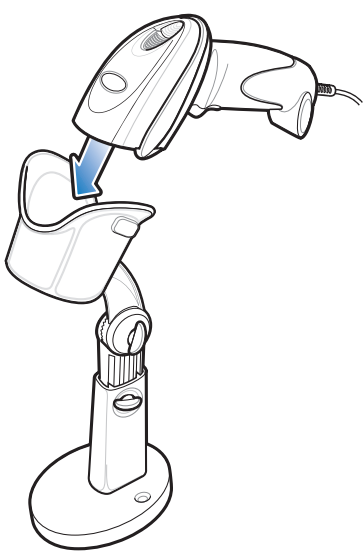


<http://www.motorola.com/ds6708>

See Product Reference Guide for detailed information

### ACCESSORIES

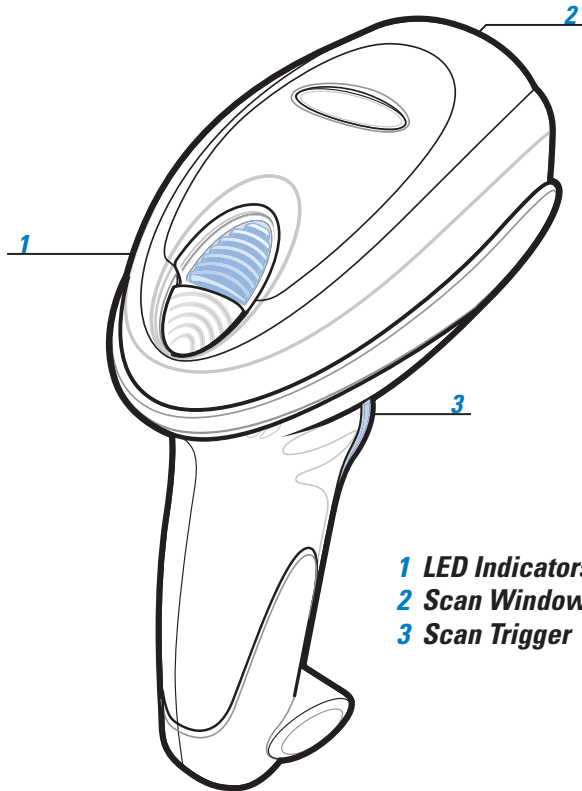
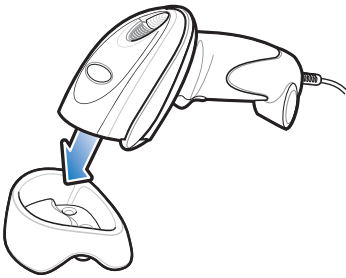
#### IntelliStand



#### Wall Mount

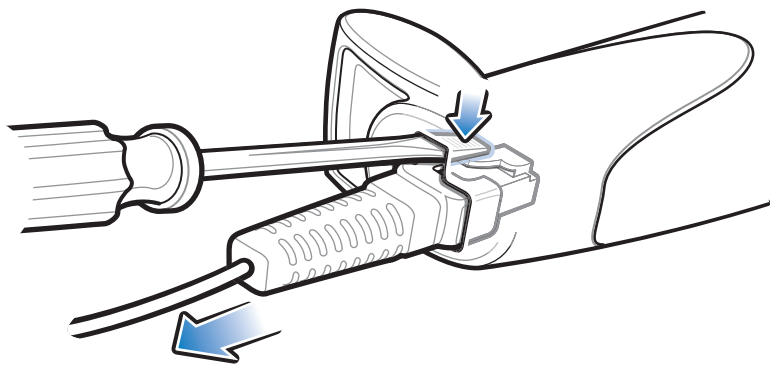
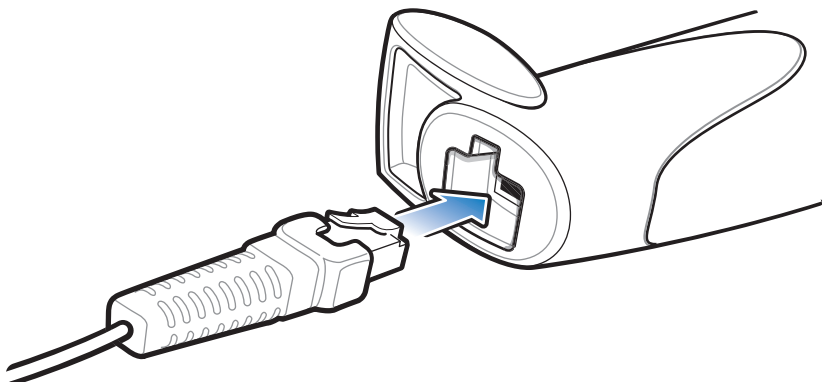


#### Desk Cup



- 1 LED Indicators
- 2 Scan Window
- 3 Scan Trigger

### CORD ATTACHMENT/REMOVAL



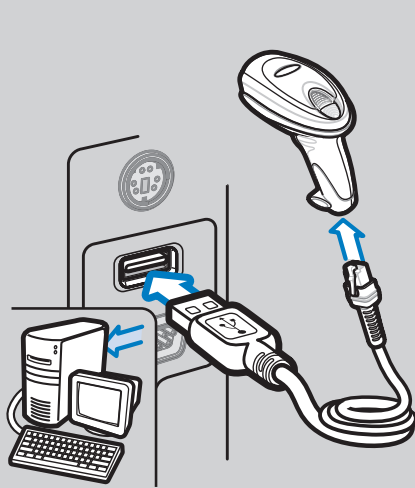
### HOST INTERFACES

NOTE: Cables may vary depending on configuration

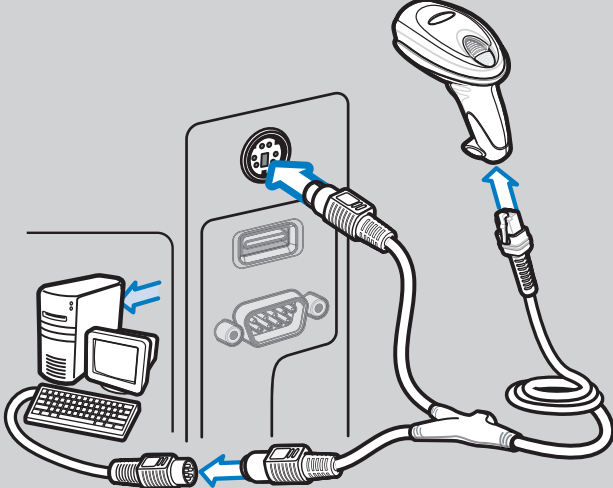
#### RS-232



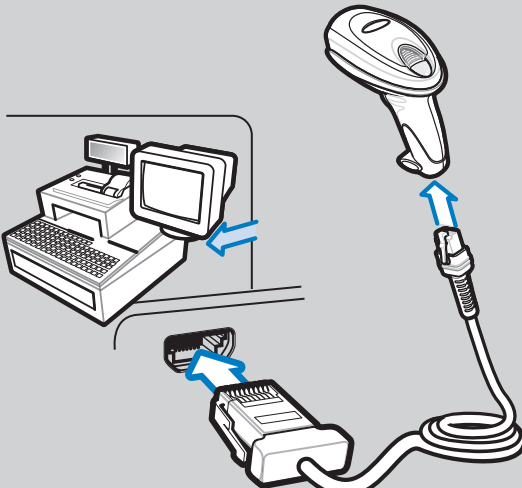
#### USB



#### Keyboard Wedge



#### IBM 46XX



### TROUBLESHOOTING

#### Scanner not working

##### No power to scanner

Check system power; ensure power supply, if required, is connected

##### Incorrect interface cable used

Ensure that correct interface cable is used

##### Interface/power cables are loose

Ensure all cable connections are secure

#### Scanner not decoding bar code

##### Scanner not programmed for bar code type

Ensure scanner is programmed to read type of bar code being scanned

##### Bar code unreadable

Ensure bar code is not defaced; try scanning test bar code of same bar code type

##### Distance between scanner and bar code incorrect

Move scanner closer to or further from bar code

#### Scanner decoding bar code, but data not transmitting to host

##### Scanner not programmed for correct host interface

Scan appropriate host parameter bar codes

##### Interface cable is loose

Ensure all cable connections are secure

#### Scanned data incorrectly displayed on host

##### Scanner not programmed for correct host interface

Scan appropriate host parameter bar codes

### SYMBOL DS6708 PROGRAMMING BAR CODES

#### Set Defaults



SET DEFAULTS

#### Enter Key (Carriage Return/Line Feed)



<DATA><SUFFIX 1>

#### IBM 46XX Host Types



PORT 5B

#### USB Host Types



HID KEYBOARD EMULATION

#### Level



LEVEL



PORT 9B



IBM HAND-HELD USB

#### RS-232 Host Types



STANDARD RS-232



NIXDORF RS-232 MODE B

#### Keyboard Wedge Host Types



IBM PC/AT and IBM PC COMPATIBLE



ICL RS-232



FUJITSU RS-232



NIXDORF RS-232 MODE A

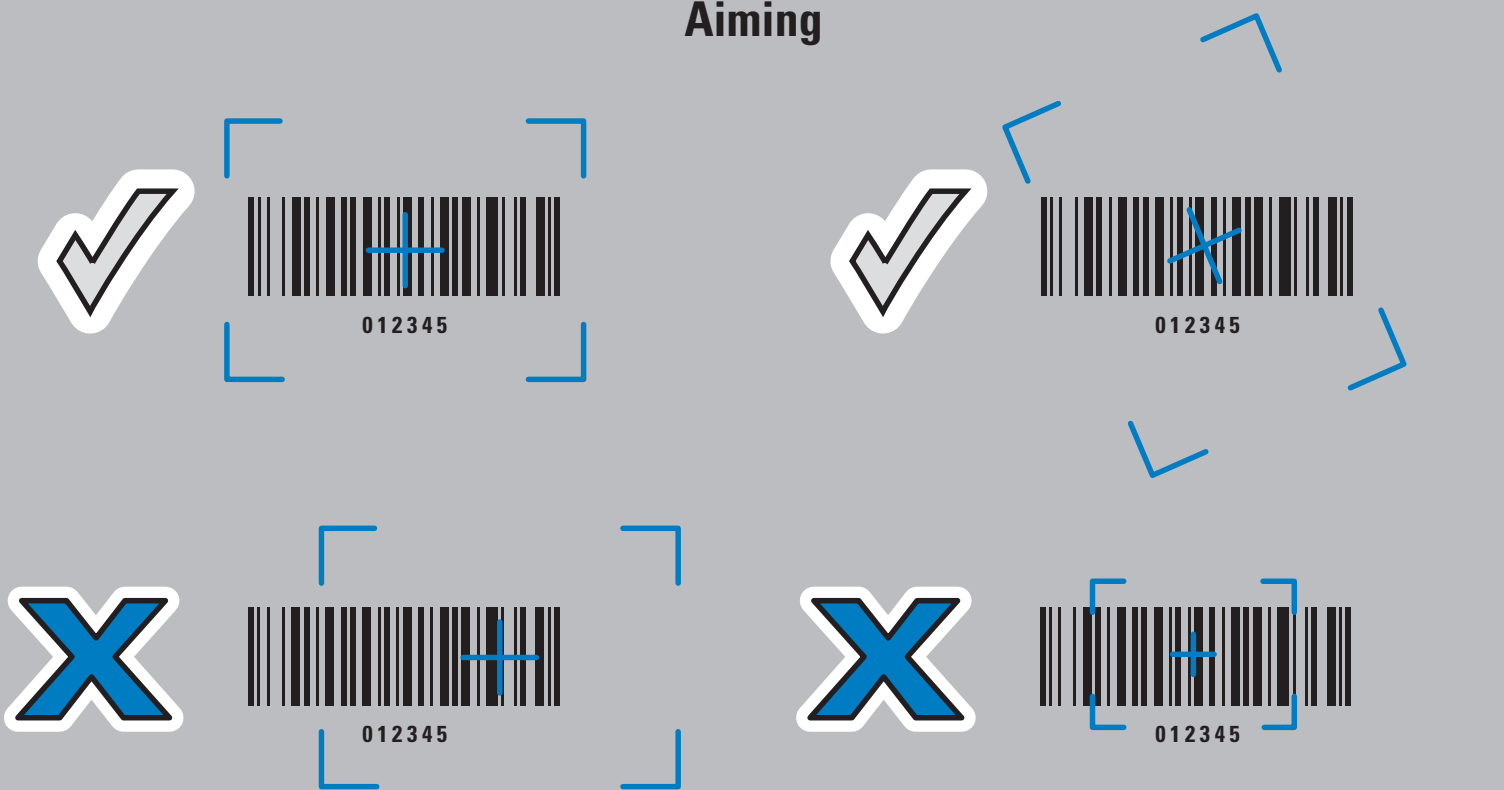
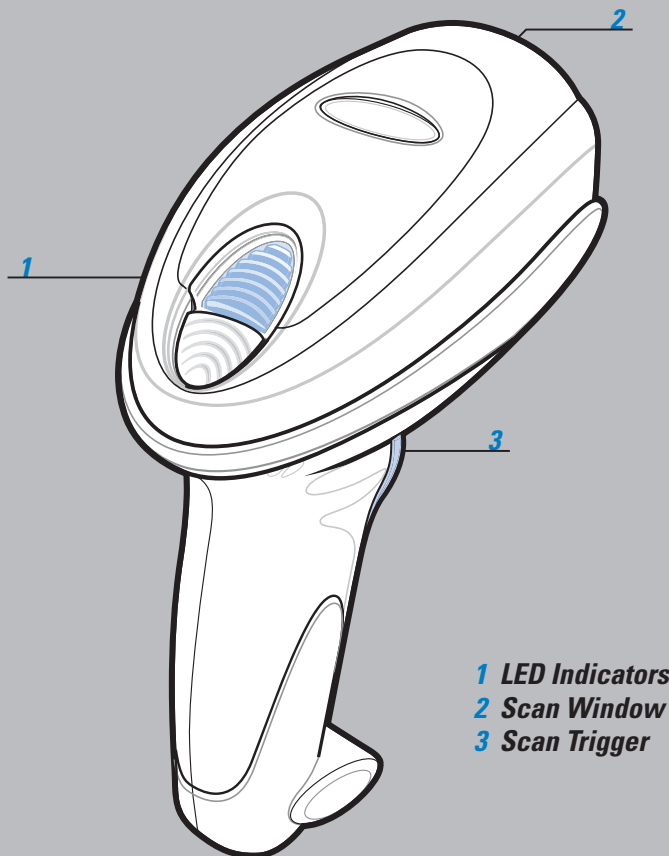


OPOS/JPOS



# SYMBOL DS6708

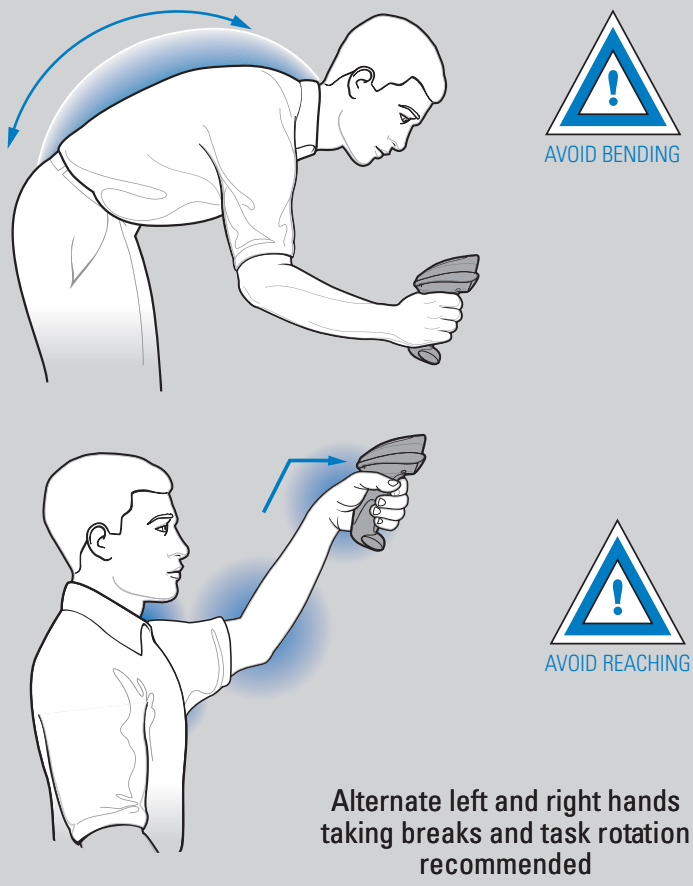
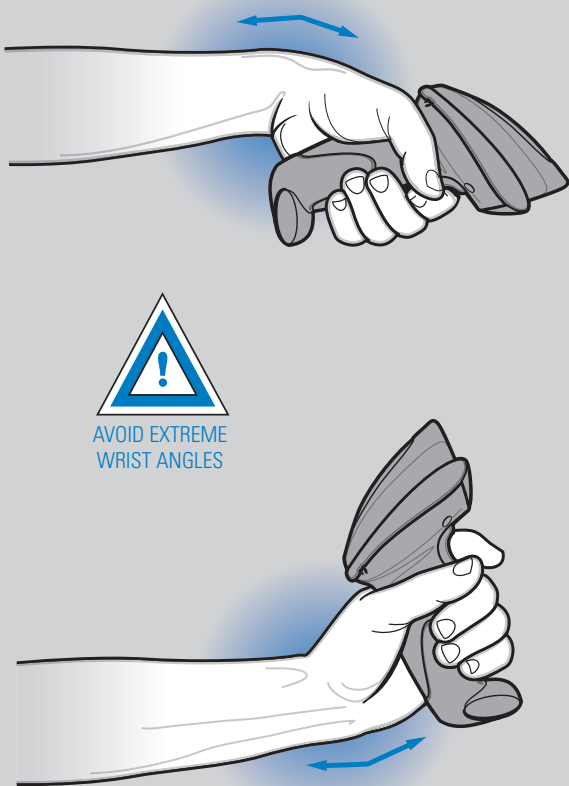
## OPTIMUM SCANNING



## OPTIMUM ARM POSITION

## AVOID EXTREME WRIST ANGLES

## AVOID BENDING AND REACHING



## BEEPER INDICATIONS

## LED INDICATIONS

Standard Use		
Low/medium/high beep	Short medium beep	4 long low beeps
Power up	Bar code decoded	Transmission error detected; data is ignored

Parameter Menu Scanning		
High/low/high/low beep	High/low beep	Low/high beep
Successful parameter setting	Correct programming sequence performed	Incorrect programming sequence or "Cancel" bar code scanned

Off	Green	Red
Scanner is on and ready to scan, or no power to scanner	Bar code is successfully decoded	Transmission error

Local Contact: \_\_\_\_\_

## 123SCAN<sup>2</sup>

123Scan<sup>2</sup> is an easy-to-use, PC-based software tool that enables rapid and easy customized setup via a bar code or USB cable. For more information, visit: <http://www.motorola.com/123Scan2>.

# SYMBOL DS6708

## REGULATORY INFORMATION

© 2010 MOTOROLA, INC. All rights reserved.

Motorola reserves the right to make changes to any product to improve reliability, function, or design.

Motorola does not assume any product liability arising out of, or in connection with, the application or use of any product, circuit, or application described herein. No license is granted, either expressly or by implication, estoppel, or otherwise under any patent right or patent, covering or relating to any combination, system, apparatus, machine, material, method, or process in which Motorola products might be used. An implied license exists only for equipment, circuits, and subsystems contained in Motorola products.

MOTOROLA, the Stylized M Logo and Symbol and the Symbol logo are registered trademarks of Motorola, Inc. Other product names mentioned in this manual may be trademarks or registered trademarks of their respective companies and are hereby acknowledged.

### Warranty

For the complete Motorola hardware product warranty statement, go to: <http://www.motorola.com/enterprisemobility/warranty>.

### Service Information

If you have a problem using the equipment, contact your facility's Technical or Systems Support. If there is a problem with the equipment, they will contact the Motorola Enterprise Mobility Support at:

<http://www.motorola.com/enterprisemobility/contactsupport>.

For the latest version of this guide go to:

<http://www.motorola.com/enterprisemobility/manuals>.

### Power Supply

Use ONLY a LISTED Motorola, Type no. 50-14000, or PWRS-14000, Direct Plug-In power supply, marked Class 2 or LPS, or SELV, Rated 5 Vdc, 850 m A Min. (IEC 60950-1). Use of alternative power supply will invalidate any approvals given to this device and may be dangerous.

### Waste Electrical and Electronic Equipment (WEEE)

**English:** For EU Customers: All products at the end of their life must be returned to Motorola for recycling. For information on how to return product, please go to: <http://www.motorola.com/recycling/wcee>.

**Italian:** Se i clienti in EC: Tutti i prodotti alla fine della loro vita devono essere restituiti a Motorola per essere riciclati. Per informazioni su come restituire il prodotto, andare su: <http://www.motorola.com/recycling/wcee>.

**Chinese:** 对于欧盟客户: 所有产品在生命周期结束时必须返回摩托罗拉进行回收。有关如何退回产品的信息, 请访问: <http://www.motorola.com/recycling/wcee>。

**Dutch:** TI klanen in EU: Alle producten aan het einde van hun levensduur aan Motorola te retourneren voor recycling. Raadpleeg: <http://www.motorola.com/recycling/wcee>.

**French:** Pour clients en la Union Europeenne: Tous les produits en fin de cycle de vie doivent être retournés à Motorola pour recyclage. Pour de plus amples informations sur le retour de produits, consultez: <http://www.motorola.com/recycling/wcee>.

**German:** Für kunden in der EU: Alle Produkte müssen am Ende ihrer Lebensdauer zur Motorola zurückgeschickt werden. Informationen zur Rücksendung von Produkten finden Sie unter: <http://www.motorola.com/recycling/wcee>.

**Japanese:** 欧州連合 (EU) の顧客向け: 製品のライフサイクルの終わりに至ると、製品は必ず Motorola に返却され、リサイクルされます。返却方法の詳細については、<http://www.motorola.com/recycling/wcee> をご覧ください。

**Korean:** EU 고객들을 위한: 모든 제품은 수명 주기의 끝에서 Motorola로 돌려보내어 재활용되어야 합니다. 제품 반환에 대한 자세한 정보는 <http://www.motorola.com/recycling/wcee>에서 확인하십시오.

**Polish:** Dla klientów z UE: Wszystkie produkty po zakończeniu ich cyklu życia należy zwrócić do Motoroli w celu recyklingu. Aby uzyskać więcej informacji na temat zwrócenia produktów, odwiedź: <http://www.motorola.com/recycling/wcee>.

**Russian:** Для клиентов из ЕС: Все продукты в конце срока службы должны быть возвращены в Motorola для переработки. Для получения информации о возврате продукции, пожалуйста, посетите: <http://www.motorola.com/recycling/wcee>.

**Slovak:** Pre zákazníkov z EÚ: Všetky výrobky musia byť po ukončení doby ich životnosti vrátené spoločnosti Motorola na recykliáciu. Viac informácií o vrátení výrobkov nájdete na: <http://www.motorola.com/recycling/wcee>.

**Slovenian:** Za kupce v EU: vsi izdelki se morajo po poteku življenjske dobe vrniti podjetju Motorola na recikliranje. Za informacije o vračilu izdelka obiščite: <http://www.motorola.com/recycling/wcee>.

**Spanish:** Para clientes en la Unión Europea: Todos los productos al final de su ciclo de vida deben ser devueltos a Motorola para su reciclaje. Para más información sobre cómo devolver un producto, visite: <http://www.motorola.com/recycling/wcee>.

**Swedish:** För kunder inom EU: Alla produkter som uppnått sin livslängd måste returneras till Motorola för återvinning. Mer information om hur du returnerar produkter finns på: <http://www.motorola.com/recycling/wcee>.

**Turkish:** AB müşterileri için: Kullanılan tüm cihazlar kullanımdan kaldırıldıktan sonra Motorola'ya geri döndürülmelidir. Cihazları nasıl geri döndürdüğünüz hakkında bilgi için lütfen şu adresi ziyaret edin: <http://www.motorola.com/recycling/wcee>.

**MOTOROLA**

Motorola, Inc.  
One Motorola Plaza Holtsville, New York 11742-1300, USA

MOTOROLA and the Stylized M Logo and Symbol and the Symbol logo are registered in the U.S. Patent and Trademark Office. All other product or service names are the property of their respective owners.

© Motorola, Inc. 2010



72-83973-01 Revision C March 2010



### Ergonomic Recommendations

**Caution:** In order to avoid or minimize the potential risk of ergonomic injury follow the recommendations below. Consult with your local Health & Safety Manager to ensure that you are adhering to your company's safety programs to prevent employee injury.

- Reduce or eliminate repetitive motion
- Maintain a natural position
- Reduce or eliminate excessive force
- Keep objects that are used frequently within easy reach
- Perform tasks at correct heights
- Reduce or eliminate vibration
- Reduce or eliminate direct pressure
- Provide adjustable workstations
- Provide adequate clearance
- Provide a suitable working environment
- Improve work procedures.

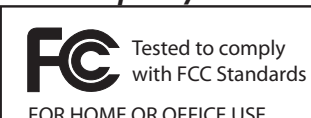
### Regulatory Information

Symbol Technologies, Inc., the Enterprise Mobility business of Motorola, Inc. ("Motorola").

All Symbol devices are designed to be compliant with rules and regulations in locations they are sold and will be labeled as required.

Any changes or modifications to Symbol Technologies equipment, not expressly approved by Symbol Technologies, could void the user's authority to operate the equipment.

### Radio Frequency Interference Requirements



**Note:** This equipment has been tested and found to comply with the limits for a Class B digital device, pursuant to Part 15 of the FCC rules. These limits are designed to provide reasonable protection against harmful

interference in a residential installation. This equipment generates, uses and can radiate radio frequency energy and, if not installed and used in accordance with the instruction manual, may cause harmful interference to radio communications.

However there is no guarantee that interference will not occur in a particular installation. If this equipment does cause harmful interference to radio or television reception, which can be determined by turning the equipment off and on, the user is encouraged to try to correct the interference by one or more of the following measures:

- Reorient or relocate the receiving antenna
- Increase the separation between the equipment and receiver
- Connect the equipment into an outlet on a circuit different from that to which the receiver is connected
- Consult the dealer or an experienced radio/TV technician for help.

### Radio Frequency Interference Requirements – Canada

This Class B digital apparatus complies with Canadian ICES-003.

Cet appareil numérique de la classe B est conforme à la norme NMB-003 du Canada.

### Marking and European Economic Area (EEA)



#### Statement of Compliance

Symbol Technologies, Inc., hereby declares that this device is in compliance with all the applicable Directives, 89/336/EEC, 73/23/EEC. A Declaration of Conformity may be obtained from <http://www.motorola.com/enterprisemobility/doc>.

### Laser Labels

In accordance with Clause 5, IEC 825 and EN60825, the following information is provided to the user:



<b>ENGLISH</b> CLASS 1 CLASS 2	CLASS 1 LASER PRODUCT LASER LIGHT DO NOT STARE INTO BEAM CLASS 2 LASER PRODUCT	<b>HEBREW</b> מוצר לייזר רמת 1 מוצר לייזר רמת 2 אזהרה: אל תבזבז את העיניים אל תבזבז את העיניים	
<b>DANISH / DANSK</b> KLASSE 1 KLASSE 2	KLASSE-1 LASERPRODUKT LASERLYF SE IKKE IND I STRÅLEN KLASSE 2 LASERPRODUKT	<b>ITALIAN / ITALIANO</b> CLASSE 1 CLASSE 2	PRODOTTO AL LASER DI CLASSE 1 LUCE LASER NON FISSARE IL RAGGIO/PRODOTTO AL LASER DI CLASSE 2
<b>DUTCH / NEDERLANDS</b> KLASSE 1 KLASSE 2	KLASSE-1 LASERPRODUKT LASERLICHT NIET IN STRAAL STAREN KLASSE-2 LASERPRODUKT	<b>NORWEGIAN / NORSK</b> KLASSE 1 KLASSE 2	LASERPRODUKT, KLASSE 1 LASERLYS IKKE STIRR INN ILYSSTRÅLEN LASERPRODUKT, KLASSE 2
<b>FINNISH / SUOMI</b> LUOKKA 1 LUOKKA 2	LUOKKA 1 LASERTUOTE LASERVALO ÄLÄ TUUJOTA SÄDETTÄ LUOKKA 2 LASERTUOTE	<b>PORTUGUESE / PORTUGUÊS</b> CLASSE 1 CLASSE 2	PRODUTO LASER DA CLASSE 1 LUZ LASER NÃO MIRE FJAJAMENTE EL HAZ PRODUTO LASER DA CLASSE 2
<b>FRENCH / FRANÇAIS</b> CLASSE 1 CLASSE 2	PRODUIT LASER DE CLASSE 1 LUMIERE LASER NE PAS REGARDER LE RAYON FxEMENT PRODUIT LASER DE CLASSE 2	<b>SPANISH / ESPAÑOL</b> CLASE 1 CLASE 2	PRODUCTO LASER DE LA CLASE 1 LUZ LASER NO MIRE FJAJAMENTE EL HAZ PRODUCTO LASER DE LA CLASE 2
<b>GERMAN / DEUTSCH</b> KLASSE 1 KLASSE 2	LASERPRODUKT DER KLASSE 1 LASERSTRAHLEN NICHT DIREKT IN DEN LASERSTRAHL SCHAUEN LASERPRODUKT DER KLASSE 2	<b>SWEDISH / SVENSKA</b> KLASS 1 KLASS 2	LASERPRODUKT KLAS 1 LASERLJUS STIRRA INTE MOT STRÅLEN LASERPRODUKT KLAS 2
<b>JAPANESE</b> / 日本語 第1種 第2種	レーザー製品 レーザー光線 光線を見つめないでください レーザー製品	<b>CHINESE</b> / 简体中文 1 类 2 类	1 类激光产品 激光切勿注视光束 2 类激光产品
		<b>KOREAN</b> / 한국어 1등급 2등급	1등급 레이저 제품 레이저 광선 이 광선을 주의하지 마십시오. 2등급 레이저 광선

### Laser Devices



Symbol products using lasers comply with US 21CFR1040.10 and 1040.11 except for deviations pursuant to laser notice no. 50, dated June 24, 2007 and IEC 60825-1 (Ed. 2.0), EN60825-1:2007.

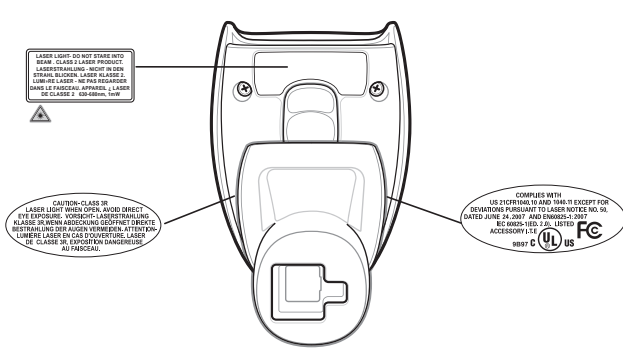
The laser classification is marked on one of the labels on the product.

Class 1 Laser devices are not considered to be hazardous when used for their intended purpose. The following statement is required to comply with US and international regulations:

**Caution:** Use of controls, adjustments or performance of procedures other than those specified herein may result in hazardous laser light exposure.

Class 2 laser scanners use a low power, visible light diode. As with any very bright light source, such as the sun, the user should avoid staring directly into the light beam. Momentary exposure to a Class 2 laser is not known to be harmful.

### Scanner Labeling



# SYMBOL DS6708

## Recommended Usage Guide