



Leitor Zebra DS3578

Projetado com inovadora tecnologia de imagem digital, o Symbol DS3578 oferece extrema rapidez e precisão de captura dos dados de códigos de barra 1D/2D. O recurso Bluetooth integrado proporciona experiência sem fio, aumentando a produtividade.



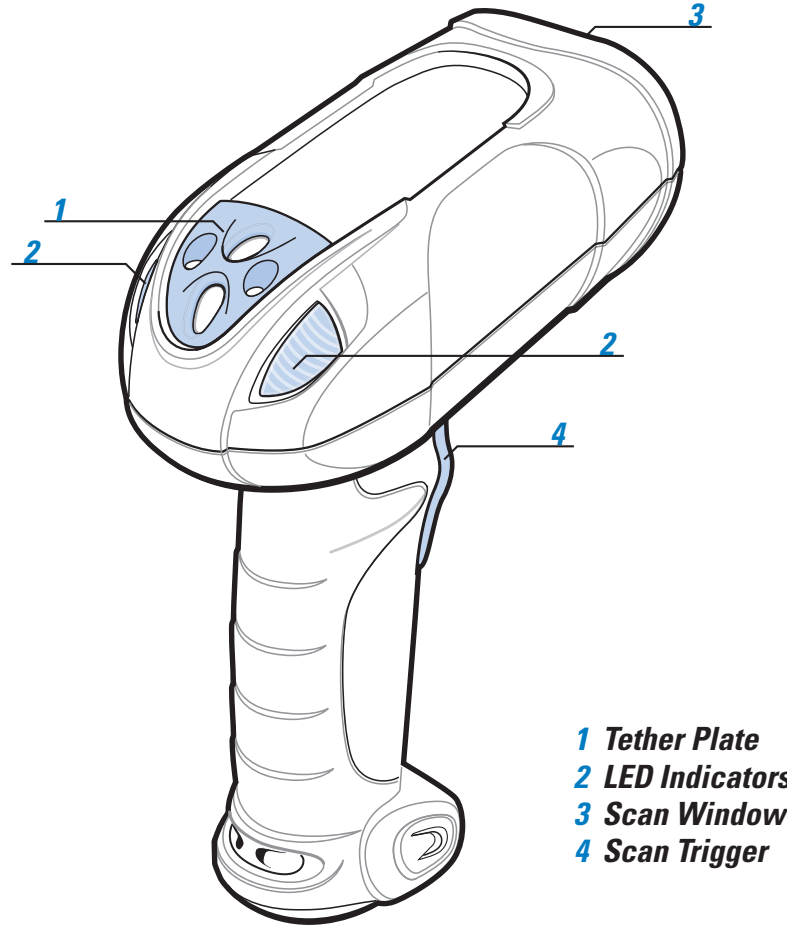
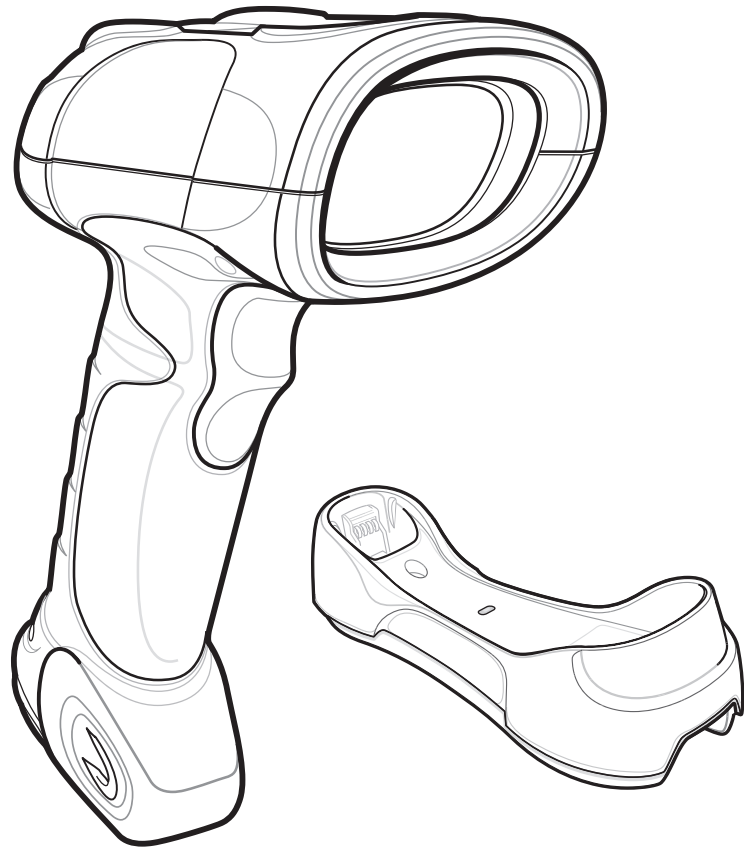
SYMBOL DS3578

Quick Start Guide

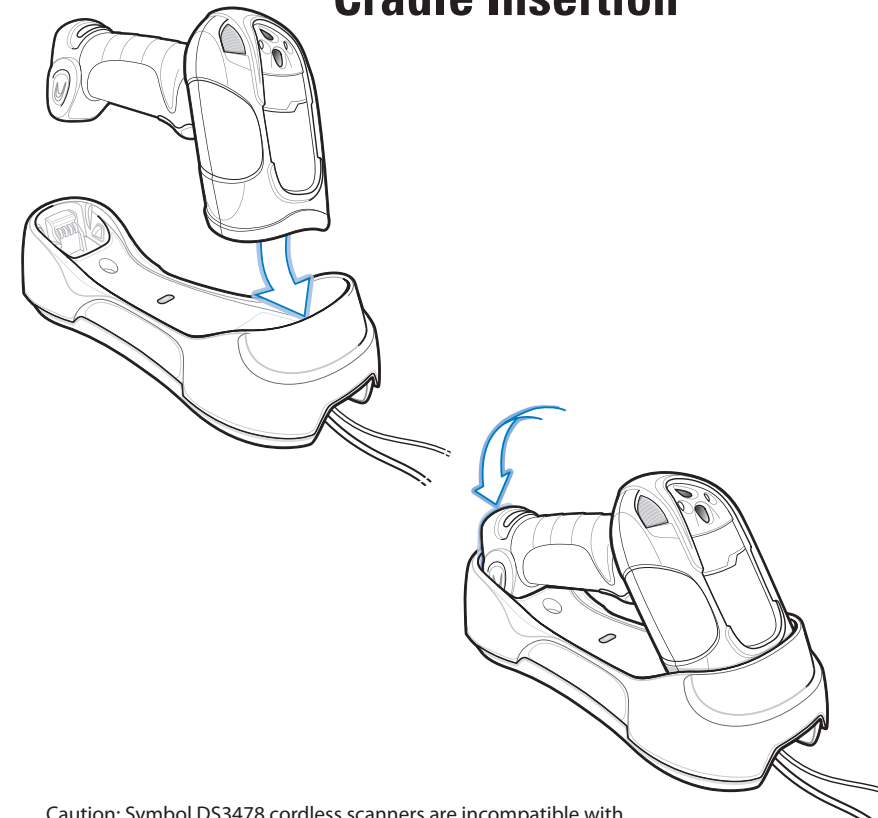


See Product Reference Guide for detailed information

POST IN WORK AREA

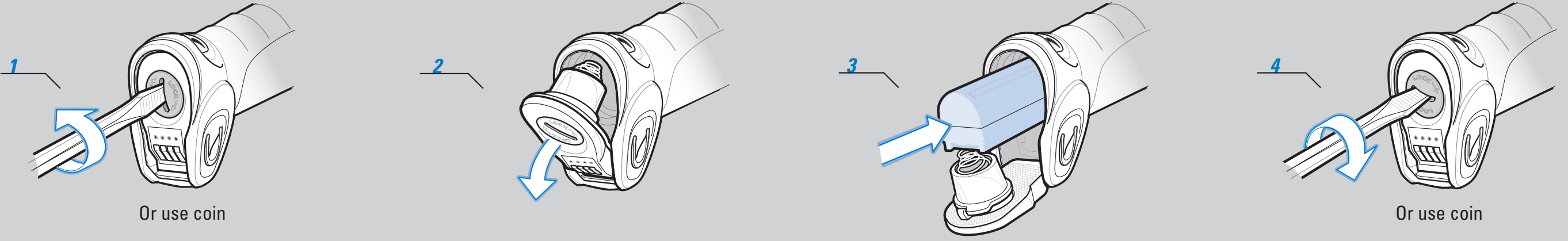


Cradle Insertion



Caution: Symbol DS3478 cordless scanners are incompatible with Symbol STB3508/3578 cradles. Symbol DS3578 cordless scanners are incompatible with Symbol STB3408/3478 cradles.

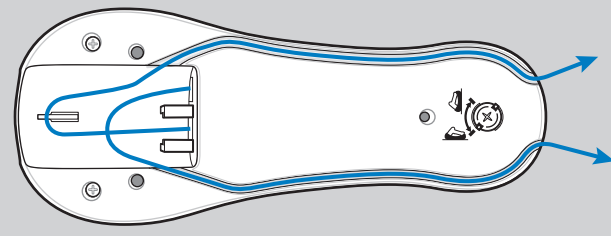
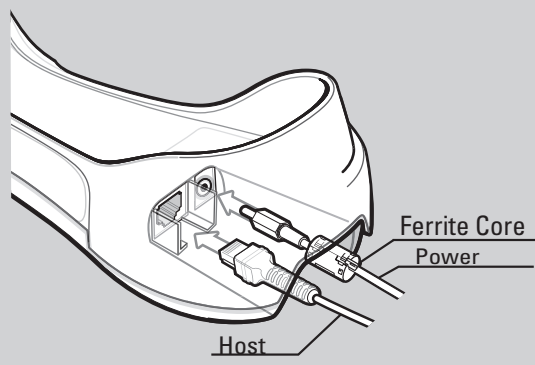
BATTERY INSERTION/REMOVAL



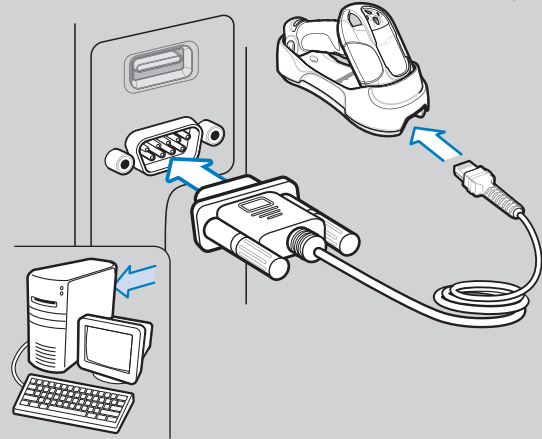
HOST INTERFACES

NOTE: Cables may vary depending on configuration. When using an external power supply, place the ferrite core on the power cable, insert the power supply cable into the cradle, then insert the host cable. Connect AC power last.

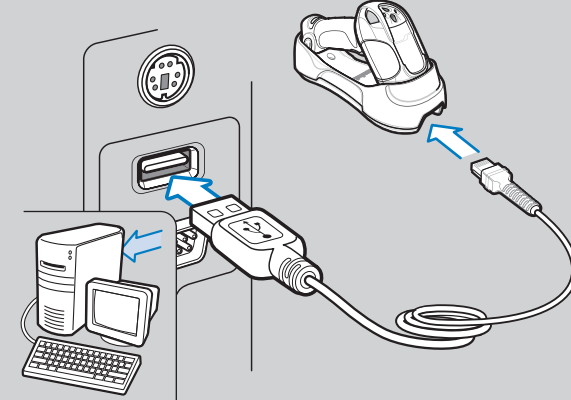
Cable Connection at Cradle



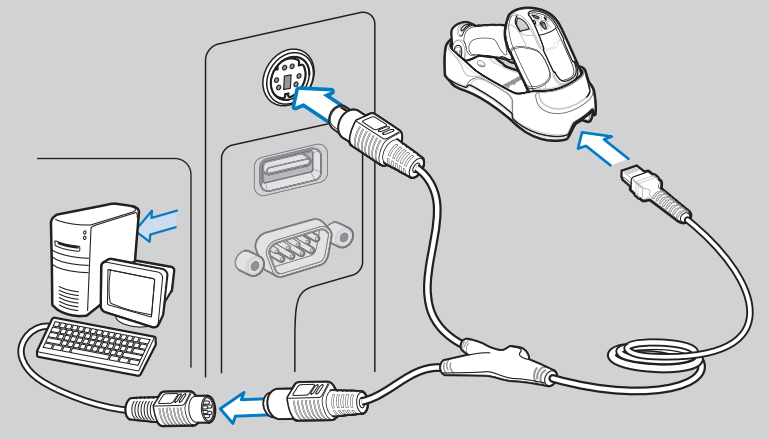
RS-232



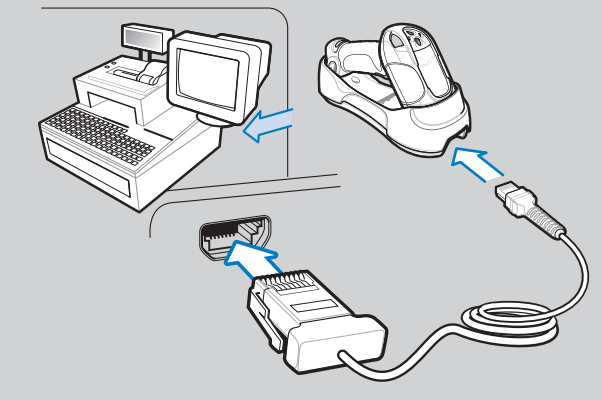
USB



Keyboard Wedge



IBM 46XX



TROUBLESHOOTING

Please refer to the Symbol DS3578 Product Reference Guide Troubleshooting section for further information.

Scanner not working

- No power to scanner: Check battery
- End cap not secured correctly: Turn end cap to secure

Scanner not decoding bar code

- Scanner not programmed for bar code type: Ensure scanner is programmed to read type of bar code being scanned
- Bar code unreadable: Ensure bar code is not defaced; try scanning test bar code of same bar code type

Scanner decoding bar code, but data not transmitting to host

- Scanner not paired to host-connected cradle: Pair the scanner to the cradle (using the PAIR bar code on the cradle)
- Cradle not programmed for correct host interface: Check scanner host parameters or edit options
- Interface cable is loose: Check for loose cable connections

Scanned data incorrectly displayed on host

- Paired cradle host communication parameters do not match the host's parameters: Check cradle host parameters or edit options

If data is still not transmitting to host, it may be necessary to recycle power on the cradle.

SYMBOL DS3578 PROGRAMMING BAR CODES

Set Defaults

Note: The scanner connection to the cradle is dissolved when Set Defaults is scanned.



SET DEFAULTS

Unpairing/Disconnection



UNPAIR/DISCONNECT

USB Host Types



HID KEYBOARD EMULATION



IBM HAND-HELD USB

IBM 46XX Host Types



PORT 5B



PORT 9B

Keyboard Wedge Host Types



IBM PC/AT and IBM PC COMPATIBLE

Carriage Return/Line Feed



SCAN OPTIONS



<DATA><SUFFIX>



ENTER

Radio Communications Host Types



CRADLE HOST



SERIAL PORT PROFILE (SLAVE)



BLUETOOTH KEYBOARD EMULATION (HID SLAVE)



SERIAL PORT PROFILE (MASTER)

RS-232 Host Types



STANDARD RS-232



ICL RS-232



NIXDORF RS-232 MODE B



FUJITSU RS-232



NIXDORF RS-232 MODE A



OPOS/JPOS

