



Leitor Zebra DS3508

O leitor Symbol Zebra DS3508 é robusto e oferece captura de dados abrangente e de alto desempenho, para ambientes industriais adversos. Projetado com inovadora tecnologia de imagem digital, trabalha com extrema rapidez e precisão na captura dos dados.

SYMBOL DS3508

Quick Start Guide

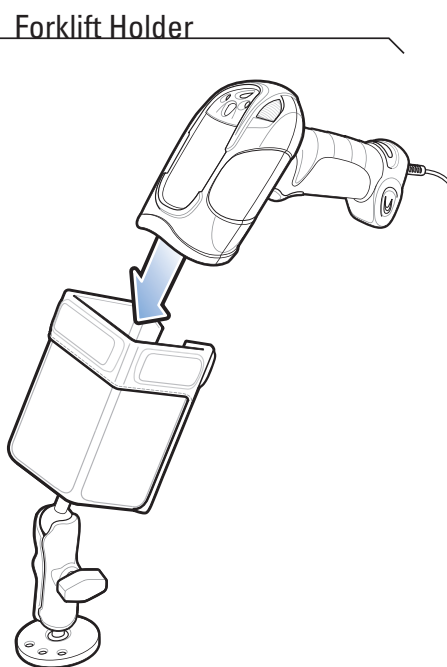
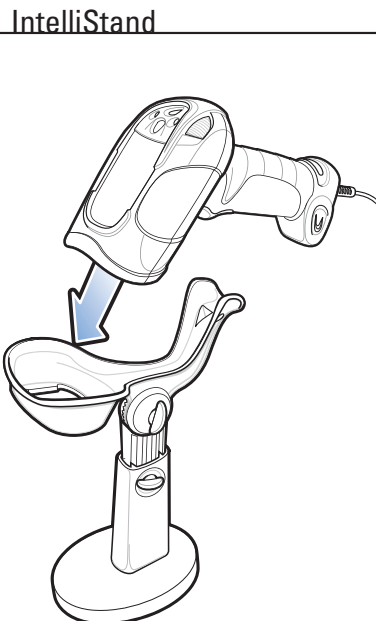
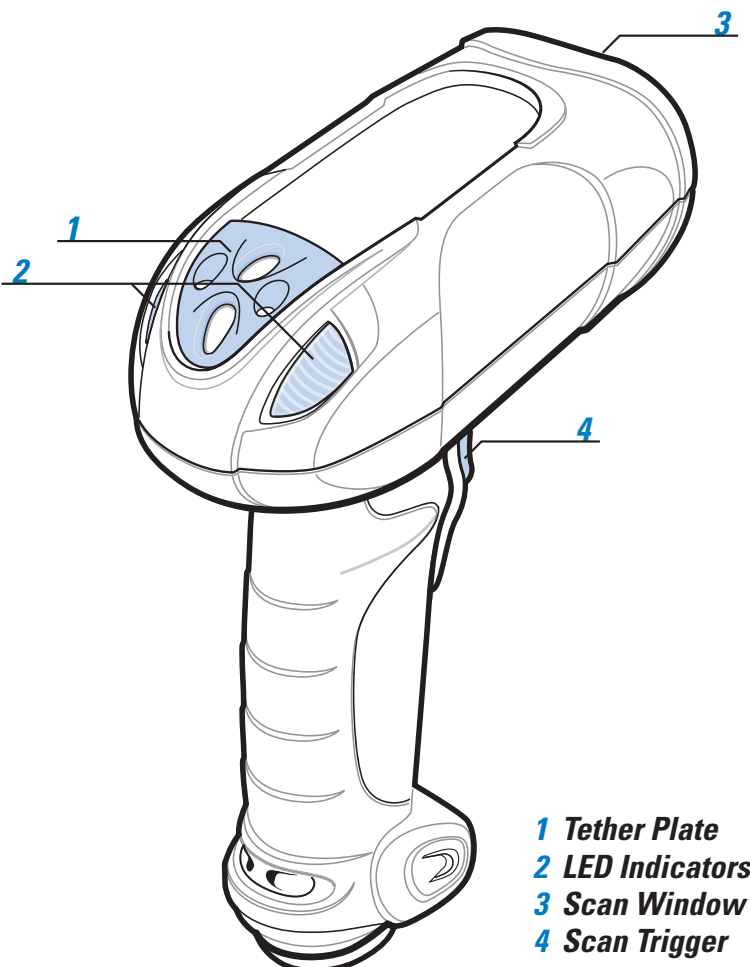
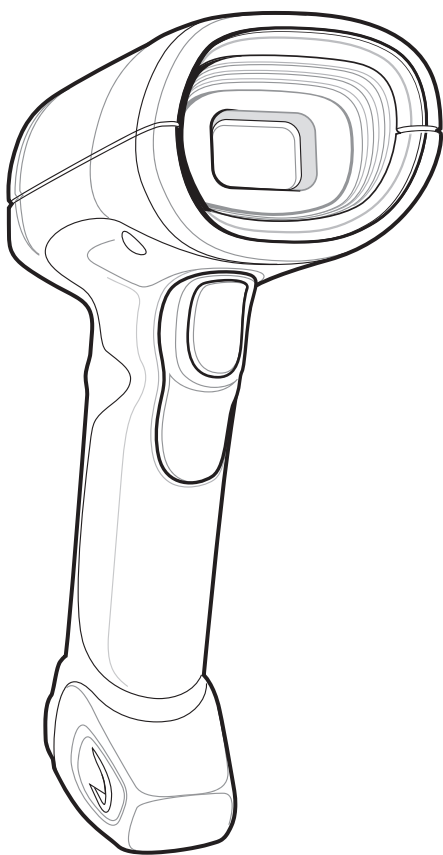
<http://www.motorola.com/ds3508>

See Product Reference Guide for detailed information

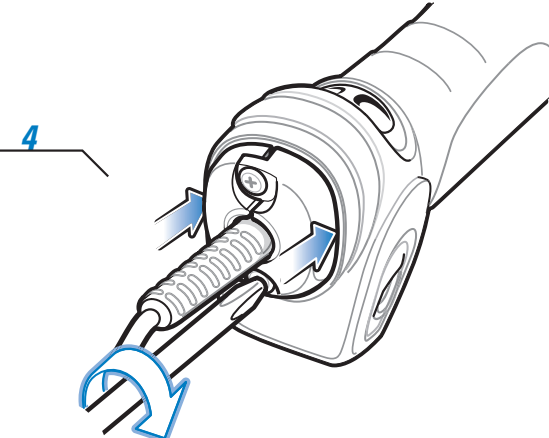
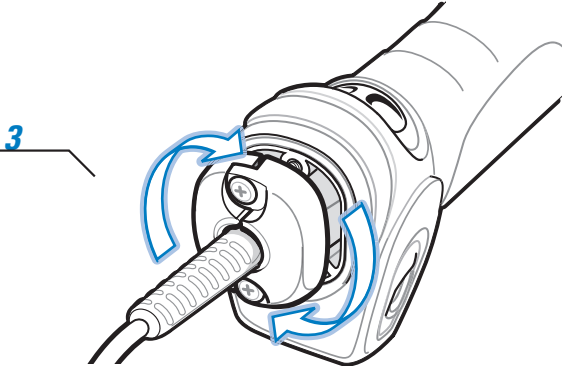
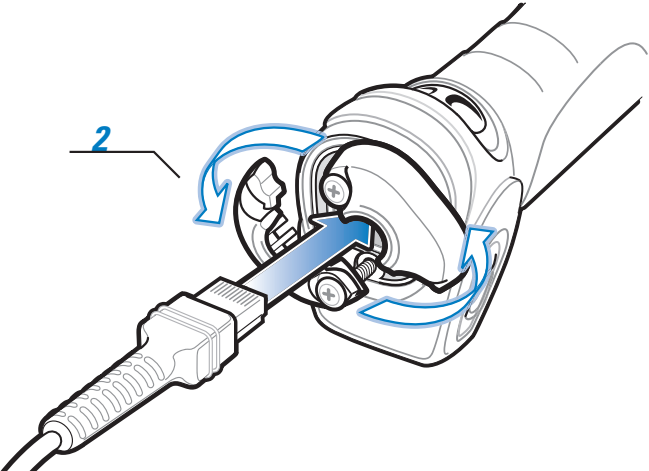
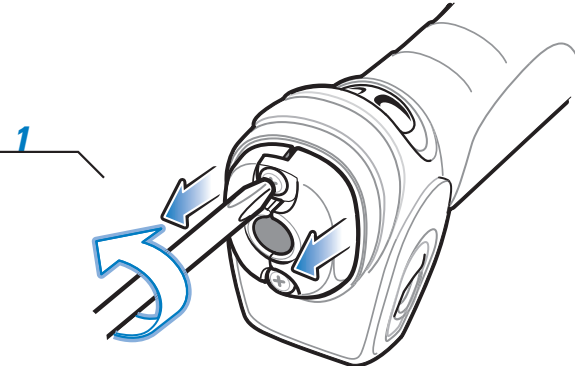


ACCESSORIES

POST IN WORK AREA



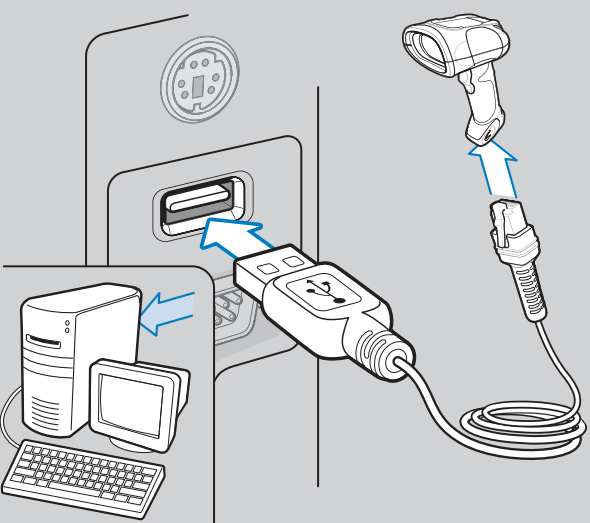
CORD ATTACHMENT



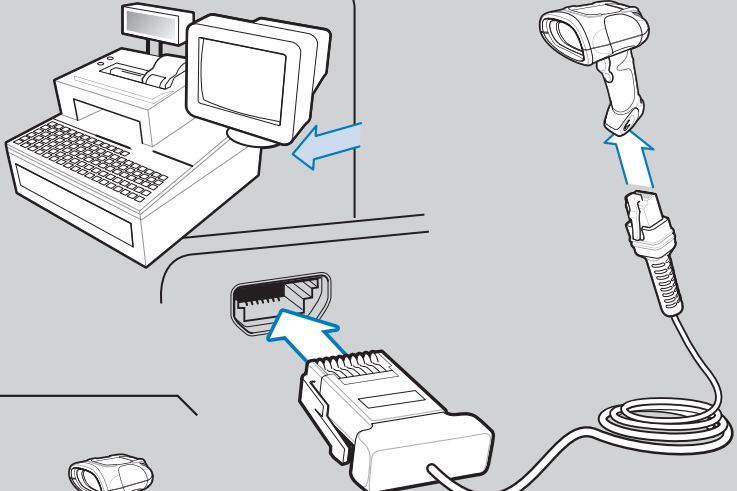
HOST INTERFACES

NOTE: Cables may vary depending on configuration

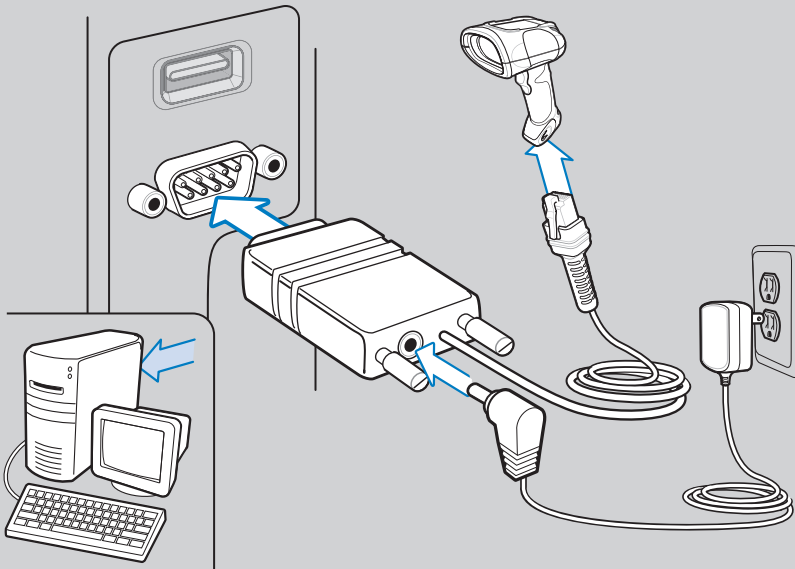
USB



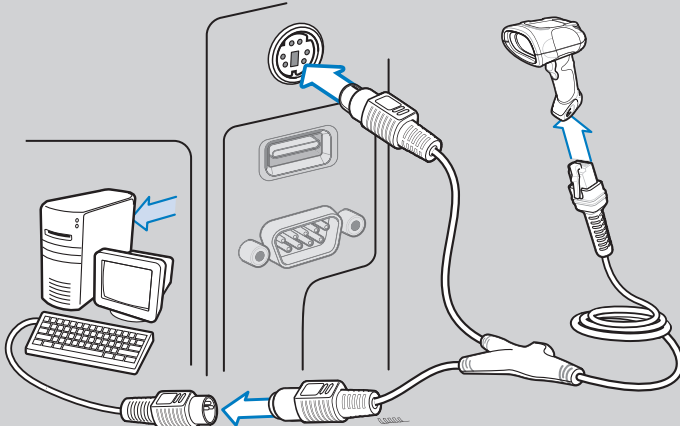
IBM 46XX



RS-232



Keyboard Wedge



TROUBLESHOOTING

Scanner not working

No power to scanner

Check system power; ensure power supply, if required, is connected

Incorrect interface cable used

Ensure that correct interface cable is used

Interface/power cables are loose

Check for loose cable connections

Scanner not decoding bar code

Scanner not programmed for bar code type

Ensure scanner is programmed to read type of bar code being scanned

Bar code unreadable

Ensure bar code is not defaced; try scanning test bar code of same bar code type

Distance between scanner and bar code incorrect

Move scanner closer to or further from bar code

Scanner decoding bar code, but data not transmitting to host

Scanner not programmed for correct host interface

Check scanner host parameters or edit options

Interface cable is loose

Check for loose cable connections

Scanned data incorrectly displayed on host

Scanner not programmed for correct host interface

Check scanner host parameters or edit options

SYMBOL DS3508 PROGRAMMING BAR CODES

Set Defaults



SET DEFAULTS

USB Host Types



HID KEYBOARD EMULATION



IBM HAND-HELD USB

RS-232 Host Types



STANDARD RS-232



ICL RS-232



NIXDORF RS-232 MODE A

IBM 46XX Host Types



PORT 5B



PORT 9B



NIXDORF RS-232 MODE B



FUJITSU RS-232



OPOS/JPOS

Keyboard Wedge Host Types



IBM PC/AT and IBM PC COMPATIBLE

Scan to Add an Enter Key (Carriage Return/Line Feed)



SCAN OPTIONS



<DATA><SUFFIX>



ENTER

