



Coletor de Dados Honeywell Dolphin 6100

O coletor de dados Honeywell Dolphin 6100 é confiável e de aspecto elegante, que oferece coleta avançada de dados e comunicação sem fio em tempo real, incluindo verificação/auditoria de preços, gerenciamento de estoque, atendimento ao cliente e merchandising.





Dolphin™ 6100 Mobile Computer

Quick Start Guide

Dolphin 6100 Mobile Computer

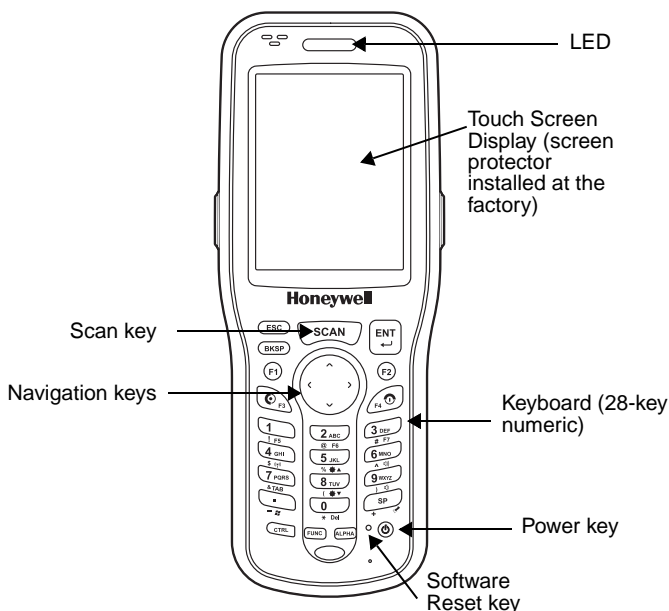
Out of the Box

Verify that your carton contains the following items:

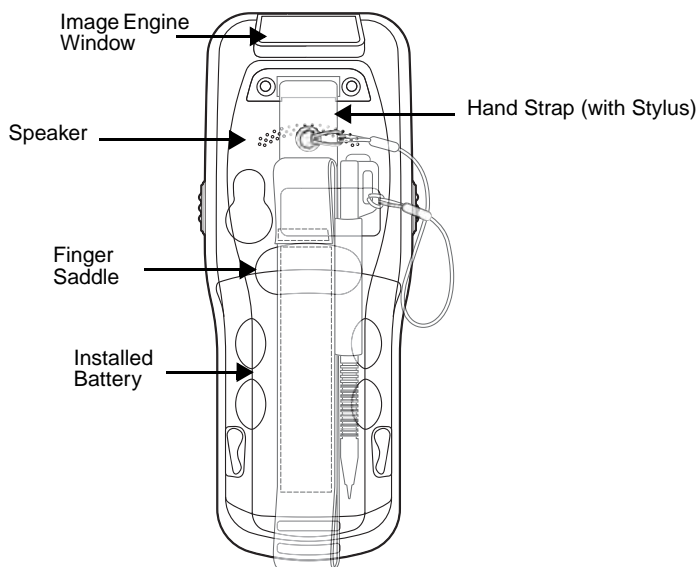
- Dolphin 6100 mobile computer (the terminal)
- Main battery pack (3.7v, Li-ion)
- AC power supply
- Localized plug adapters

Note: Be sure to keep the original packaging in case you need to return the Dolphin terminal for service; see [page 5](#).

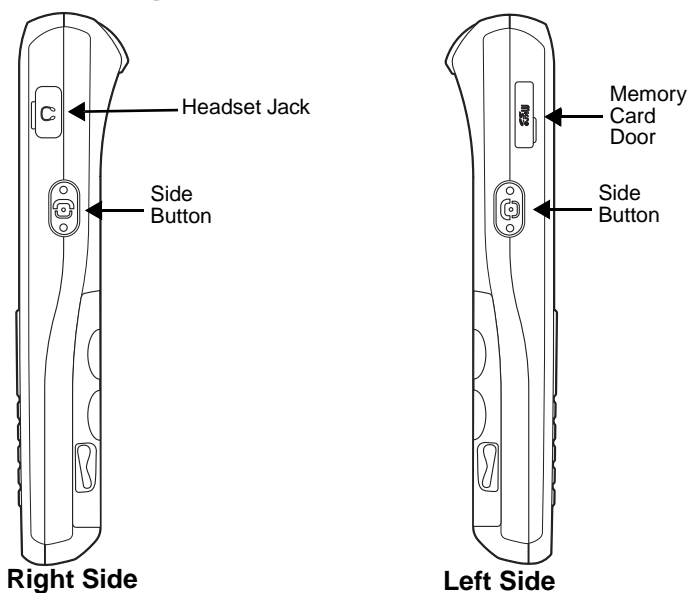
Dolphin 6100 Front Panel



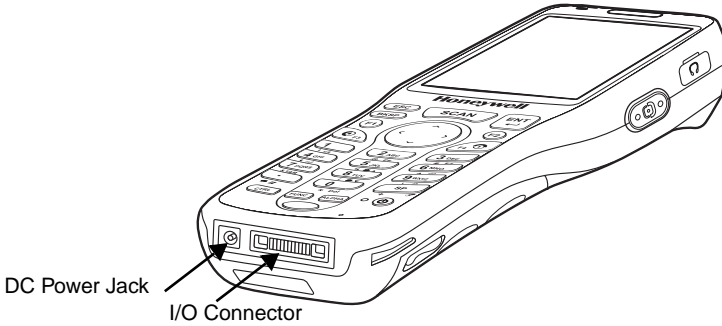
Dolphin 6100 Back Panel



Dolphin 6100 Right and Left-Side Panels



Dolphin 6100 Bottom Connectors



Step 1: Install the Main Battery

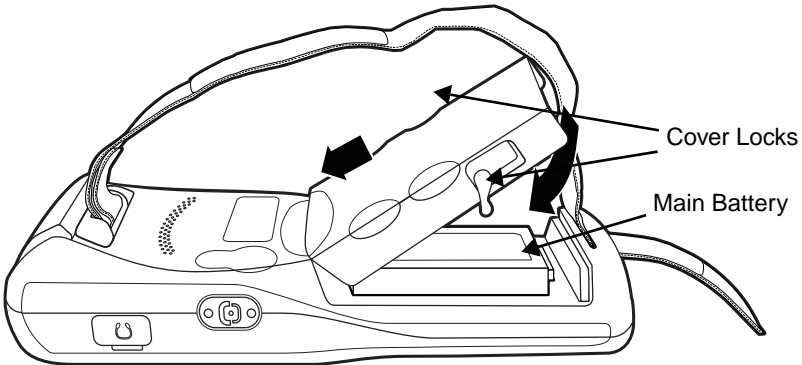


Ensure all components are dry prior to placing the battery in the terminal. Mating wet components may cause damage not covered by the warranty.



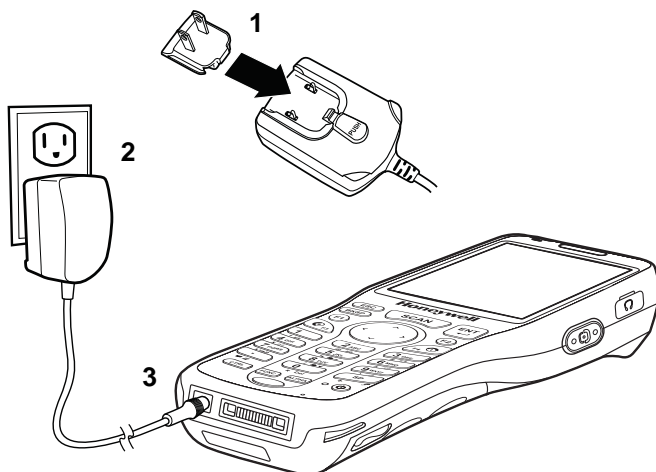
We recommend use of Honeywell Li-Ion battery packs. Use of any non-Honeywell battery may result in damage not covered by the warranty.

The 6100 is shipped with the battery packaged separate from the unit. To install the battery, release the hand strap, remove the battery door by turning the locks upward, insert the battery with the labels facing upward, and replace the battery door.



Step 2: Charge the Batteries

Dolphin terminals ship with both the main battery pack and internal backup battery significantly discharged of power. Charge the main battery pack with the Dolphin charging cable for a **minimum of 4 or 6 hours depending on your battery before initial use.**



We recommend use of Honeywell peripherals, power cables, and power adapters. Use of any non-Honeywell peripherals, cables, or power adapters may cause damage not covered by the warranty.

Step 3: Boot the Terminal

The terminal begins booting as soon as power is applied and runs by itself. Do NOT press any keys or interrupt the boot process.

When the boot process is complete, the Desktop appears and the terminal is ready for use.

Resetting the Device

Soft Reset: Using the stylus press and release the **Reset** button. This resets RAM and reloads the OS.

Hard Reset: Using the stylus press and hold the **Reset** button and then press and release the **Power** button. This resets RAM, reloads the OS, and resets the Real Time Clock.

Available Dolphin 6100 Peripherals and Accessories

Dolphin HomeBase™ Device

Dolphin QuadCharger™ Device

Dolphin eBase Device

Dolphin USB Communication Cable

Technical Assistance

Contact information for technical support, product service, and repair can be found at www.honeywellaidc.com.

Limited Warranty

Please refer to www.honeywellaidc.com/warranty_information for the warranty information.

User Documentation

Refer to www.honeywellaidc.com for detailed user documentation or for localized versions of this quick start.

Disclaimer

Honeywell International Inc. ("HII") reserves the right to make changes in specifications and other information contained in this document without prior notice, and the reader should in all cases consult HII to determine whether any such changes have been made. The information in this publication does not represent a commitment on the part of HII.

HII shall not be liable for technical or editorial errors or omissions contained herein; nor for incidental or consequential damages resulting from the furnishing, performance, or use of this material.

This document contains proprietary information that is protected by copyright. All rights are reserved. No part of this document may be photocopied, reproduced, or translated into another language without the prior written consent of HII.

Web Address: www.honeywellaidc.com

Trademarks

Dolphin, Dolphin RF, HomeBase, Mobile Base, and QuadCharger are trademarks or registered trademarks of Hand Held Products, Inc. or Honeywell International Inc.

Microsoft, Windows, Windows Mobile, Windows CE, Windows Embedded Handheld, Windows NT, Windows 2000, Windows ME, Windows XP, ActiveSync, Outlook, and the Windows logo are trademarks or registered trademarks of Microsoft Corporation.

Other product names mentioned in this manual may be trademarks or registered trademarks of their respective companies and are the property of their respective owners.

Patents

For patent information, please refer to www.honeywellaidc.com/patents.

©2009-2011 Honeywell International Inc. All rights reserved.

Honeywell Scanning & Mobility

9680 Old Bailes Road
Fort Mill, SC 29707

www.honeywellaidc.com