



Coletor de Dados Honeywell 60S

O Dolphin 60s Scanphone combina os recursos de um smartphone tradicional agregando os valores da computação móvel resistente, somado ao leitor de códigos de barras integrado no mesmo aparelho, por um preço acessível.





Dolphin™ 60s

Quick Start Guide



Out of the Box

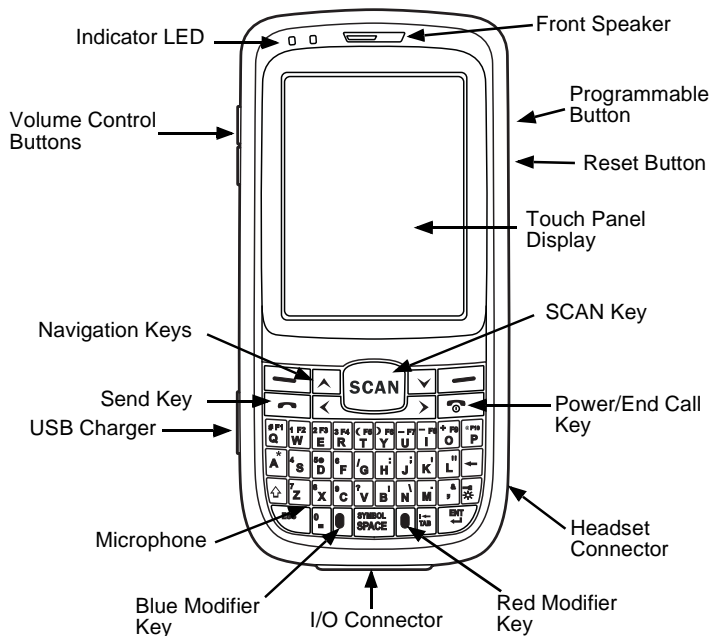
Verify that your carton contains the following items:

- Dolphin 60s mobile terminal
- Rechargeable 3.7V Li-ion Battery
- USB charge/communication cable
- Power adapter with regional plug adapters
- Quick Start Guide
- Compliance Regulatory Sheet

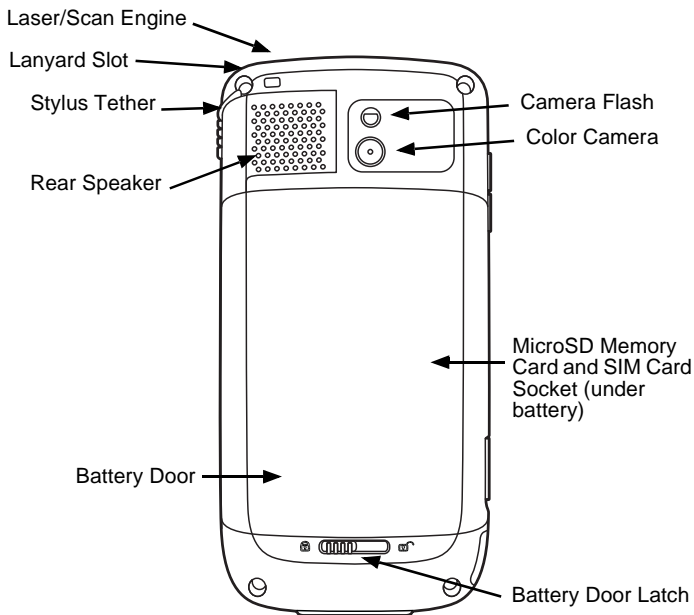
Note: If you ordered accessories for your terminal, verify that they are also included with the order.

Be sure to keep the original packaging in case you need to return the Dolphin terminal for service.

Front Panel

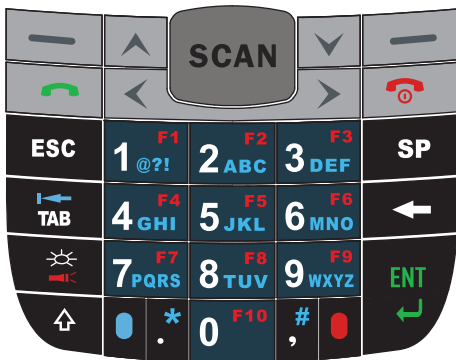


Back Panel

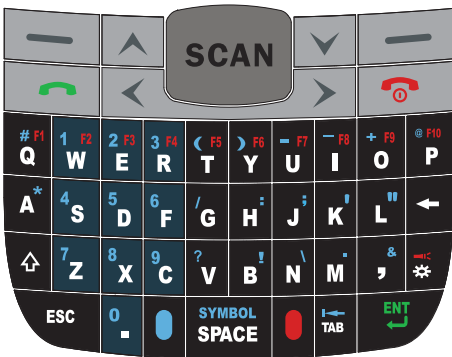


Keyboard

Numeric Keyboard



QWERTY Keyboard



Installing the Battery Pack



We recommend use of Honeywell peripherals, power cables, and power adapters. Use of any non-Honeywell peripherals, cables, or power adapters may cause damage not covered by the warranty.

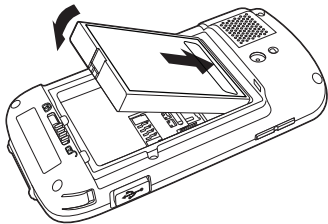


Ensure all components are dry prior to mating terminals/batteries with peripheral devices. Mating wet components may cause damage not covered by the warranty.

Dolphin 60s model terminals are designed for use with battery part number 60s-BATT-1 (Li-ion 3.7V, 12.358 watt hour) manufactured for Honeywell International Inc.

The Dolphin 60s is shipped with the battery packaged separately from the terminal. Perform the following steps to install the battery.

1. Slide the latch to unlock the battery door.
2. Open the battery door.
3. Insert the battery into the battery well with the contacts facing the top of the unit.

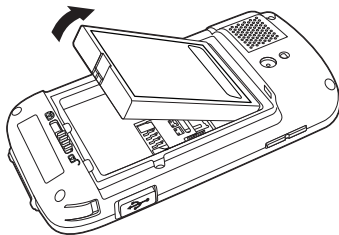


4. Re-install the battery door.
5. Connect the terminal to one of the Dolphin 60s charging peripherals to charge the battery pack.

Removing the Battery Pack

Perform the following steps to remove the battery.

1. Slide the latch to unlock the battery door.
2. Open the battery door.
3. Remove the battery.




Charging the Dolphin 60s

Dolphin terminals ship with the battery significantly discharged of power. Charge the battery pack with a Dolphin charging device for a minimum of 6 hours before initial use.

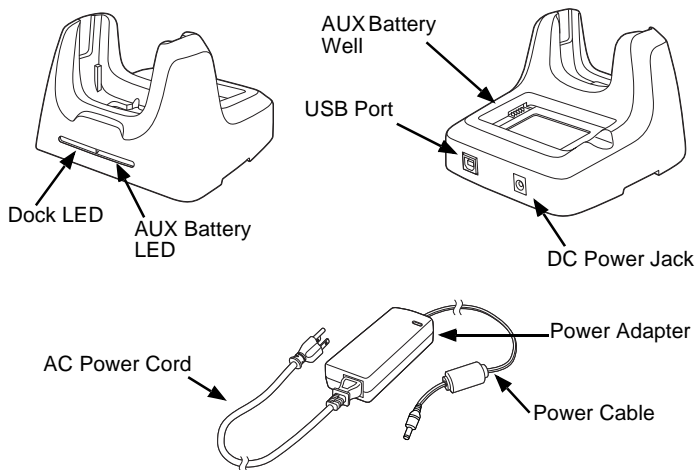
Suspending/Resuming Terminal

To put the device into Suspend mode when the terminal is powered on:



1. Press and release the **Power** key  for approximately 4-5 seconds.

To resume from the Suspend mode, press and release the **Power** key .

HomeBase Parts (Model D60s-HB)



HomeBase LED Indicators

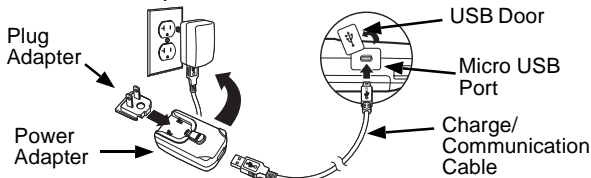
-  **AUX battery LED**
- Orange The auxiliary battery is charging.
 - Green The auxiliary battery has completed charging and is ready for use.
-  **Dock LED**
- Green The terminal is properly seated in the base.

USB Charge/Communication Cable (Model USB-WALL-CHARGER-1)

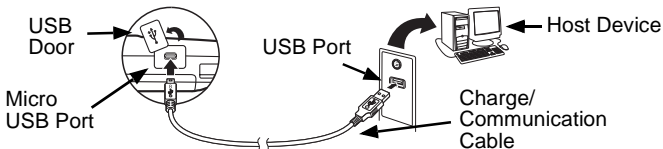
The USB Charge/Communication cable provides two options for charging the terminal. Use the cable in conjunction with the provided power supply adapter and plug adapter to charge the terminal from a power outlet or connect the cable to a high-power USB port to charge from a host device.

Option 1: Charging from a power outlet


Use only a UL Listed power supply, which has been qualified by Honeywell with an output rated at 5VDC and 1A with the device.



Option 2: Charging from a high-power USB port on a host device



Note: Charging the battery through a USB port takes more time than direct AC adapter charging. USB charging will not take place if the terminal is drawing more current than supplied by the USB port.



Tap  > **Settings** > **System** > **Power** to verify the battery is charging.

Resetting the Terminal

There are three types of system resets: a soft reset, a hard reset, or a factory reset. The soft and hard resets preserve all data stored in the file system. Contact a Honeywell technical support representative for more information on how to perform a factory reset.



Soft Reset (Warm Boot)

A soft reset re-boots the device and preserves any objects created in RAM. You would perform a soft reset when: the terminal fails to respond, after installing some software applications, or after making changes to certain settings, such as network cards.

1. Press and hold the **Blue** key  and then **Power** key  for approximately 6-7 seconds.
2. When the reset is complete, the Home screen displays.

Hard Reset (Cold Boot)

A hard reset re-boots the device and closes any open applications running in RAM at the time of reset.

1. Press and hold the **Blue** key  and then **Send** key  for approximately 6-7 seconds.
2. When the reset is complete, the Home screen displays.

ActiveSync Communication

To synchronize data (e.g., e-mail, contacts, and calendar) between the terminal and the host workstation (PC):

1. ActiveSync® (version 4.5 or higher) or Windows® Mobile Device Center (WDMC) must be installed on your PC. You can download the most current version of ActiveSync or WDMC from the [Microsoft Web site](http://go.microsoft.com/fwlink/?LinkId=147001) (<http://go.microsoft.com/fwlink/?LinkId=147001>).

Note: Dolphin terminals ship with ActiveSync already installed. ActiveSync on your Dolphin terminal works with WDMC on PCs running Windows Vista or Windows 7 and with ActiveSync on PCs running Windows XP.

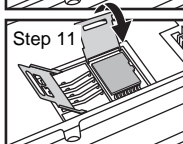
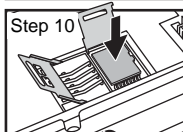
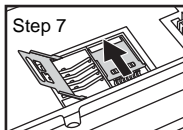
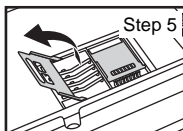
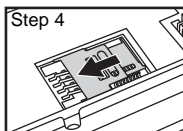
2. The Dolphin terminal and PC must be configured for the same communication type.
3. Connect the terminal to the PC (using the charge/communication cable or a Dolphin peripheral) to initiate communication. For additional information about ActiveSync or Windows Mobile Device Center, visit www.microsoft.com.



We recommend use of Honeywell peripherals, power cables, and power adapters. Use of any non-Honeywell peripherals, cables, or power adapters may cause damage not covered by the warranty.

Installing a Memory Card

1. Suspend the terminal.
2. Unlock and remove the battery door.
3. Remove the battery.
4. Slide the latch toward the bottom of the terminal to unlock the SIM card.
5. Lift the SIM card latch to reveal the SIM card.
6. Remove the SIM card to reveal the memory card latch.
7. Unlock the memory card latch by sliding the latch left.
8. Lift the latch to expose the MicroSDHC socket.
9. Remove and discard the SD card blank and replace it with the SD card you are installing.
10. Insert a MicroSD or MicroSDHC card into the socket aligning the corner on the card with the corner of the socket.
11. Close and lock the memory card latch by sliding the latch right.
12. If you want to install a SIM card, insert it into the SIM card socket (see [Installing a SIM Card](#)).
13. Close and lock the SIM card latch by sliding the latch towards the top of the terminal.
14. Install the battery.
15. Install and lock the battery door. The terminal automatically starts the power up sequence.

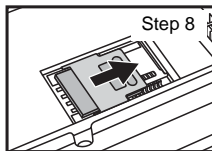
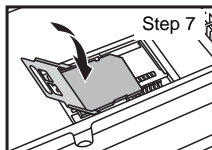
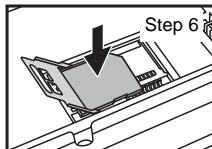
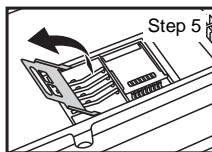
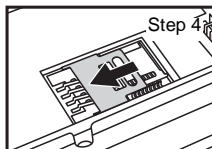


Installing a SIM Card

1. Suspend the terminal.
2. Unlock and remove the battery door.
3. Remove the battery.
4. Slide the latch toward the bottom of the terminal to unlock the SIM card.
5. Lift the SIM card latch.
6. Insert the SIM card into the SIM card socket.

Note: Make sure the interface on the card is connected to the SIM card interface in the socket; align the corner of the card with the corner of the socket.

7. Close the SIM card latch.
8. Lock the SIM card latch by sliding the latch toward the top of the terminal.
9. Install the battery.
10. Install and lock the battery door. The terminal automatically starts the power up sequence.



Using the Scan Engine

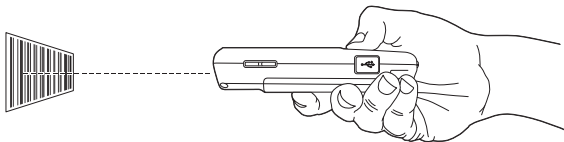
Point the aiming beam at a bar code. The aiming beam must align with the bar code for the best results. Holding the terminal between 4-10 inches (10-25 cm) from a bar code is recommended.

Note: The touch panel display can be activated by using the stylus (included with the terminal) or your finger. To activate the display, open a file, or select a menu, use the tip of the stylus to tap the touch panel display or gently press the touch panel with your finger.

1. Tap  > **Demos**  > **Scan Demo** .

*Note: You may activate the Vibrate option by selecting  > **Demos** > **Scan Demo** > **File** > **Setup** > **Vibrate**. The device vibrates each time a bar code is decoded.*

2. Point the Dolphin terminal at the bar code.



3. Project the aiming beam by pressing and holding the SCAN key.
4. Center the aiming beam over the bar code. For optimum performance, avoid reflections by scanning the bar code at a slight angle. To decode stacked bar codes (e.g., PDF417), slowly move the beam up or down over the code.
5. When the bar code is successfully decoded, the terminal LED flashes green and the terminal beeps. The bar code information is entered into the application in use.

Aiming Beam

The aiming beam is narrower when you hold the terminal closer to a bar code and the aiming beam is wider when you hold it farther from the bar code.

The aiming beam must be aimed closer to symbologies that have smaller bars or elements (mil size). The aiming beam must be aimed farther from symbologies that have larger bars or elements (mil size).




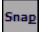
Linear Bar Code




2D Matrix Symbol



Using the Color Camera

1. Tap  > **Demos**  > **Camera Demo** .
2. Point the camera lens at an object. The camera lens is located on the back panel of the terminal.
3. Adjust the position of the camera lens to make sure that the object is showing on the screen.
4. Press the **ENT** key or tap  on the screen to take a picture.

Note: Tap the green arrow  to review or edit your pictures.

Tap the green box  to exit the picture review/edit screen.

Technical Assistance

Contact information for technical support, product service, and repair can be found at www.honeywellaidc.com.

User Documentation

For localized versions of this document, and to download the User's Guide, go to www.honeywellaidc.com.

Patents

For patent information, please refer to www.honeywellaidc.com/patents.

Limited Warranty

Refer to www.honeywellaidc.com/warranty_information for your product's warranty information.

Disclaimer

Honeywell International Inc. ("HII") reserves the right to make changes in specifications and other information contained in this document without prior notice, and the reader should in all cases consult HII to determine whether any such changes have been made. The information in this publication does not represent a commitment on the part of HII.

HII shall not be liable for technical or editorial errors or omissions contained herein; nor for incidental or consequential damages resulting from the furnishing, performance, or use of this material.

This document contains proprietary information that is protected by copyright. All rights are reserved. No part of this document may be photocopied, reproduced, or translated into another language without the prior written consent of HII.

© 2013 Honeywell International Inc. All rights reserved.

Web Address: www.honeywellaidc.com