



## Coletor de Dados Chainway C66

O Coletor Chainway C66 é um computador de mão robusto equipado com processador Qualcomm octa-core e Android 9, o C66 vem com leitura de código de barras, e função NFC.

# C66

Handheld Computer

## Accessories



### Standard

#### Adapter



PWR-C66-5V2A-CN



PWR-C66-5V2A-EU



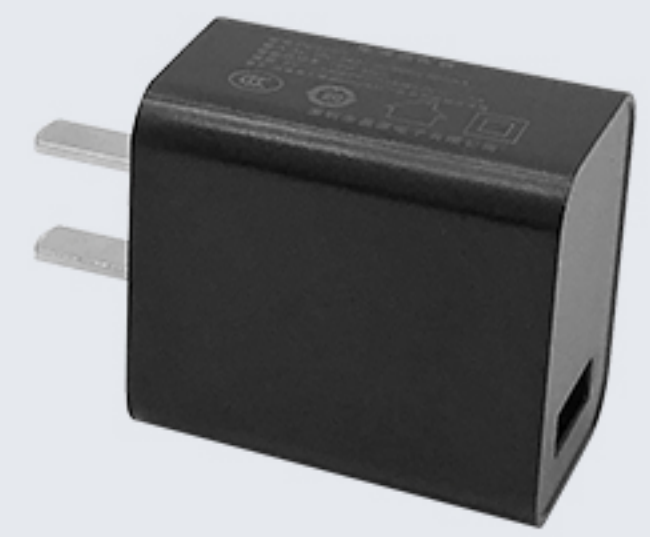
PWR-C66-5V2A-UK



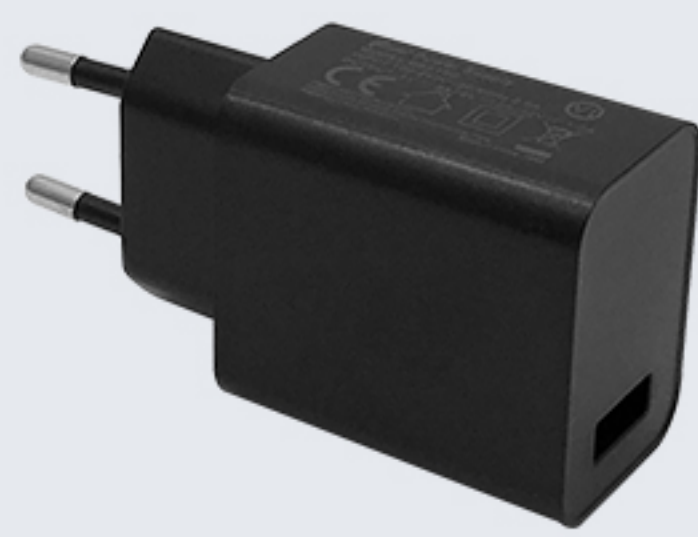
PWR-C66-5V2A-US

Adapter(CN/EU/UK/US), I/P: 100-240V, O/P: 5V2A, use with DC-BK-TypeC cable

#### QC Adapter



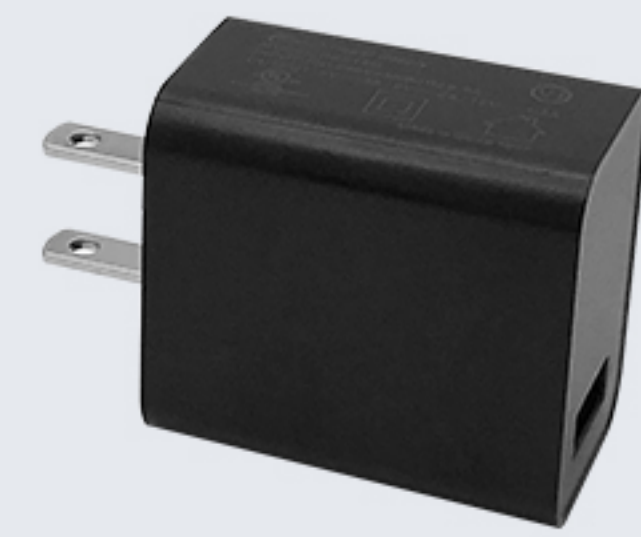
PWR-18W-CN



PWR-18W-EU



PWR-18W-UK



PWR-18W-US

Quick Charge adapter(CN/EU/UK/US), I/P: 100-240V, O/P: 5V3A/12V1.5A/9V2A, use with DC-BK-TypeC cable

Comment: standard adaptor and QC adaptor are alternative.

#### USB Cable



**DC-BK-TypeC**  
1.0 meter Type-C cable

#### Battery



**BTRY-C66-43MA**  
4300mAh Li-Ion battery, 3.8V output

### Optional

#### Rugged Rubber Boot



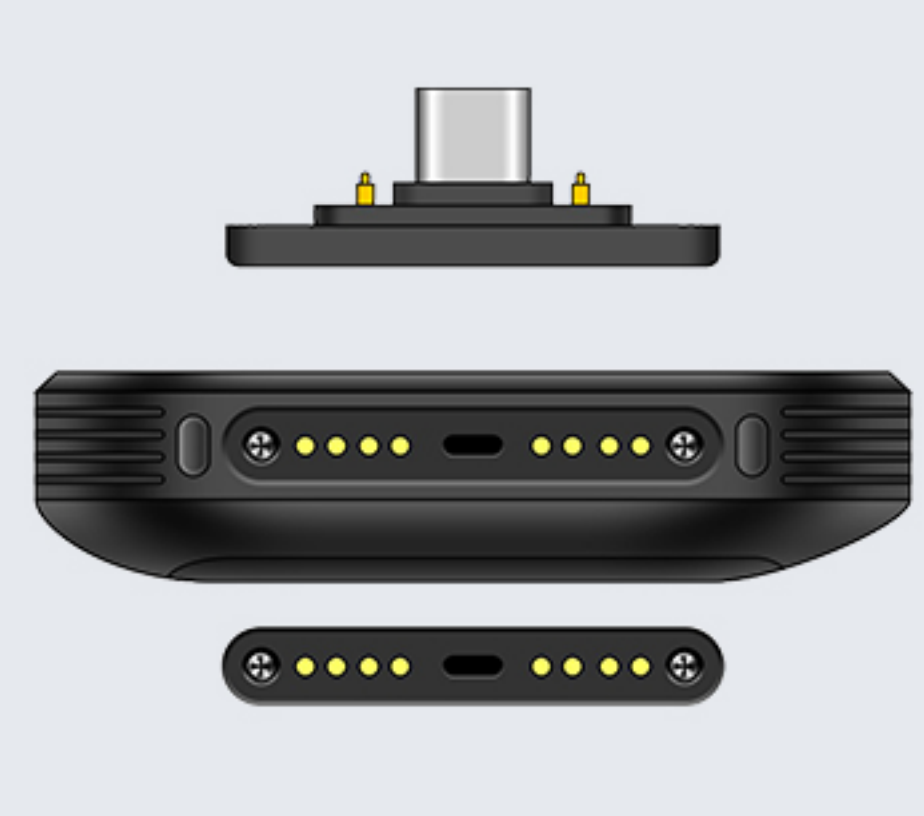
**RB-C66-RR/RB-C66-RRP**  
Rugged Rubber Boot only, omni-directional protected.  
RB-C66-RR does not support charging cradle.  
RB-C66-RRP is pre installed with Type C & Pogo Pin I/O connector, then it supports CRD-C66-RBC/CRD-C66-RBCE charging cradle.



**RB-C66-RRH/RB-C66-RRHP**  
Rugged Rubber Boot with hand strap, omni-directional protected.  
RB-C66-RRH does not support charging cradle.  
RB-C66-RRHP is pre installed with Type C & Pogo Pin I/O connector, then it supports CRD-C66-RBC/CRD-C66-RBCE charging cradle.

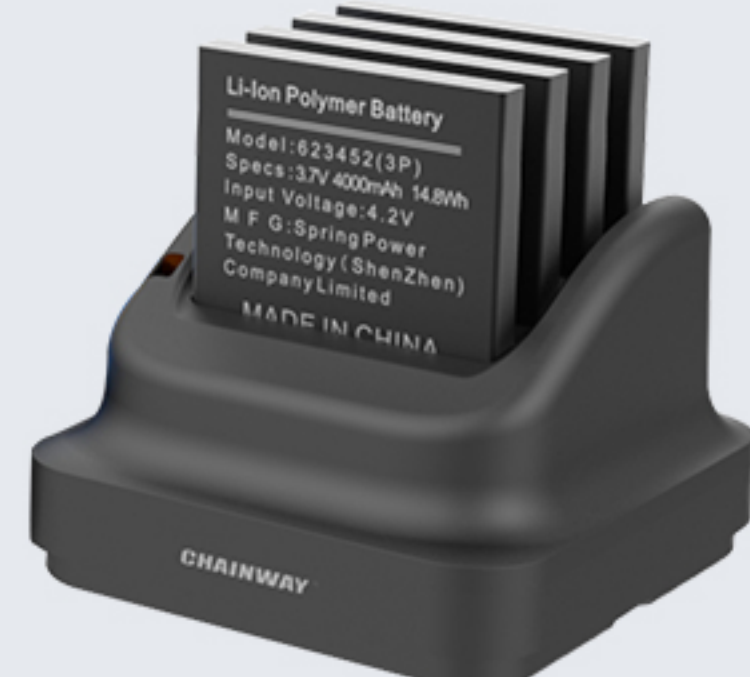


**RB-C66-RRC/RB-C66-RRCP**  
Rugged Rubber Boot with belt clip, omni-directional protected.  
RB-C66-RRC does not support charging cradle.  
RB-C66-RRCP is pre installed with Type C & Pogo Pin I/O connector, then it supports CRD-C66-RBC/CRD-C66-RBCE charging cradle.



**RB-C66-P**  
Type C & Pogo Pin I/O Connector, to be mounted with the rugged rubber boot, enable it to support charging cradle(CRD-C66-RBC/RBCE).The wired network is available when the rugged rubber boot is placed on the cradle(CRD-C66-RBCE).

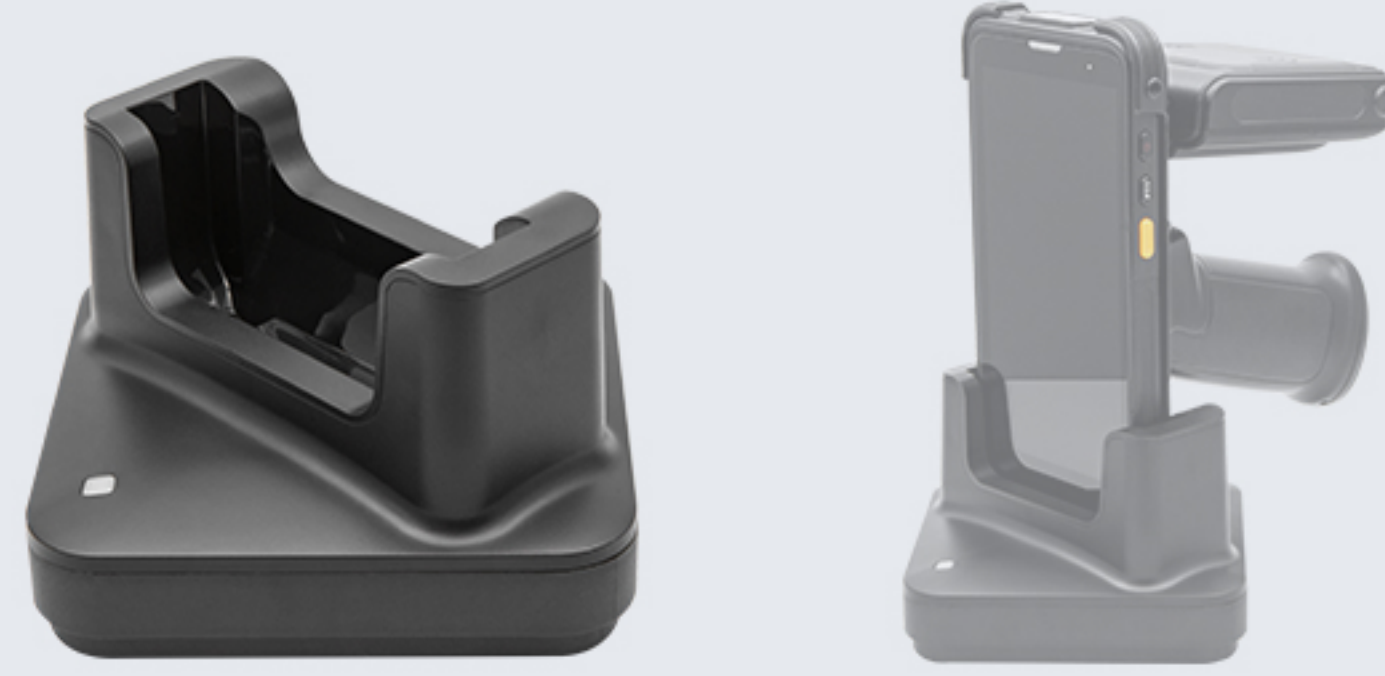
#### Charging Cradles & Adapters



**CRD-C66-MBC**  
Charging Cradle for main battery, up to 4 slots, use with DCPWR-12V2A-XX adapter.



**CRD-C66-PBC**  
Charging Cradle for pistol battery, up to 2 slots, use with DCPWR-12V2A-XX adapter.



**CRD-C66-DP**  
C66 charging cradle, only for device with pistol grip or device with UHF, use with DCPWR-12V2A-XX adapter.



**CRD-C66T-EXT**  
Single charging cradle, for volume measurement, built-in UHF and fingerprint device, use with DCPWR-12V2A-XX adapter



**CRD-C66-RBC/CRD-C66-RBCE**  
Charging Cradle for device, use with DCPWR-12V2A-XX adapter.  
CRD-C66-RBCE is an advanced CRD-C66-RBC, w/sync, w/ethernet, w/DC. The cradle cup has an insert that must be removed prior to inserting the C66 with Rugged Boot.



**DCPWR-12V2A-XX**  
Adapter(CN/EU/UK/US), I/P: 100-240V, O/P: 12V2A, DC

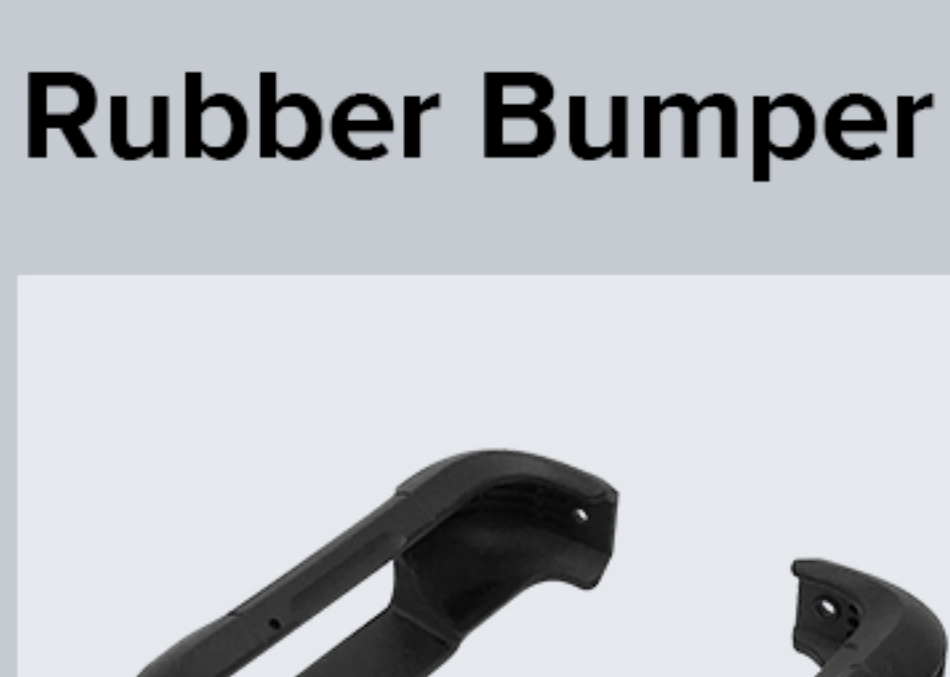


**CRD-MCB**  
The base of 4-slots charging cradle set for 4 pieces of cradle, use with DCPWR-12V5A-XX adapter.  
For load balance, recommendation:  
1. 4 x cradle for device  
2. 3 x cradle for device + 1 x cradle for main battery  
3. 2 x cradle for device + 1 x cradle for main battery + 1 x cradle for pistol battery

#### Vehicle Cradle



**CRD-C66-VC**  
Vehicle Charger Cradle, with type-C, use with DC-BK-TypeC cable. Car holder and car adapter need to be purchased separately



**RB-C66-PR**  
Protective rubber bumper, upper and lower  
4 pcs M1.6 screws are necessary.

#### Hand Strap



**RB-C66-HS**  
Hand strap with buckle  
2 pcs M1.6 screws are necessary.

#### Screen Protector



**SP-C66**  
Tempered glass screen protector

#### Pistol Grip



**RB-C66-PS**  
Snap-On Trigger Handle and Rugged Boot Kit, use with optional pistol battery  
4 pcs M1.6 screws are necessary.



**BTY-C66-PB**  
Pistol battery, 5,200 mAh